

Recombinant Human LTC4S Protein, Myc/DDK-tagged, C13 and N15-labeled

Cat. No. LTC4S-4045H Lot. No. (See product label)

SPECIFICATION

| | |
|-------------------------|--|
| Product Overview | LTC4S MS Standard C13 and N15-labeled recombinant protein (NP_665874) with a C-terminal MYC/DDK tag, was expressed in HEK293 cells. |
| Species | Human |
| Source | HEK293 |
| Description | The MAPEG (Membrane Associated Proteins in Eicosanoid and Glutathione metabolism) family includes a number of human proteins, several of which are involved the production of leukotrienes. This gene encodes an enzyme that catalyzes the first step in the biosynthesis of cysteinyl leukotrienes, potent biological compounds derived from arachidonic acid. Leukotrienes have been implicated as mediators of anaphylaxis and inflammatory conditions such as human bronchial asthma. This protein localizes to the nuclear envelope and adjacent endoplasmic reticulum. |
| Molecular Mass | 16.5 kDa |
| AA Sequence | MKDEVALLAAVTLLGVLLQAYFSLQVISARRAFRVSPPLTTGPPEFERVYRAQVNCSEYFPLFLATLWVAGIFFHEGAAALCGLVYLFARLRYFQGYARSAQLRLAPLYASARALWLLVALAALGLLAHFLPAALRAALLGQLRLLPWATRTRPLEQKLISEEDLAANDILDYKDDDDKV |
| Purity | > 80% as determined by SDS-PAGE and Coomassie blue staining |

 Tel: 1-631-559-9269 1-516-512-3133

 Email: info@creative-biomart.com  Fax: 1-631-938-8127

 45-1 Ramsey Road, Shirley, NY 11967, USA

| | |
|-----------------------|--|
| Stability | Stable for 3 months from receipt of products under proper storage and handling conditions. |
| Storage | Store at -80 centigrade. Avoid repeated freeze-thaw cycles. |
| Concentration | 50 µg/mL as determined by BCA |
| Storage Buffer | 100 mM glycine, 25 mM Tris-HCl, pH 7.3. |

GENE INFORMATION

| | |
|------------------------|--|
| Gene Name | LTC4S leukotriene C4 synthase [Homo sapiens (human)] |
| Official Symbol | LTC4S |
| Synonyms | LTC4S; leukotriene C4 synthase; MGC33147; LTC4 synthase; |
| Gene ID | 4056 |
| mRNA Refseq | NM_145867 |
| Protein Refseq | NP_665874 |
| MIM | 246530 |
| UniProt ID | Q16873 |

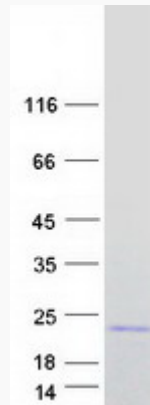
 Tel: 1-631-559-9269 1-516-512-3133

 Email: info@creative-biomart.com  Fax: 1-631-938-8127

 45-1 Ramsey Road, Shirley, NY 11967, USA



SDS-PAGE



☎ Tel: 1-631-559-9269 1-516-512-3133

☎ Email: info@creative-biomart.com ☎ Fax: 1-631-938-8127

☎ 45-1 Ramsey Road, Shirley, NY 11967, USA