

Recombinant Full Length Human LTF Protein, C-Flag-tagged

Cat. No. LTF-1062HFL Lot. No. (See product label)

SPECIFICATION

Product Overview	Recombinant Full Length Human LTF Protein, fused to Flag-tag at C-terminus, was expressed in Mammalian cells.
Species	Human
Source	Mammalian Cells
Description	This gene is a member of the transferrin family of genes and its protein product is found in the secondary granules of neutrophils. The protein is a major iron-binding protein in milk and body secretions with an antimicrobial activity, making it an important component of the non-specific immune system. The protein demonstrates a broad spectrum of properties, including regulation of iron homeostasis, host defense against a broad range of microbial infections, anti-inflammatory activity, regulation of cellular growth and differentiation and protection against cancer development and metastasis. Antimicrobial, antiviral, antifungal and antiparasitic activity has been found for this protein and its peptides. Activity against both DNA and RNA viruses has been found, including activity against SARS-CoV-2, and HIV.
Form	25 mM Tris HCl, pH 7.3, 100 mM glycine, 10% glycerol.
Molecular Mass	76.1 kDa
AA Sequence	MKLVFLVLLFLGALGLCLAGRRRRSVQWCAVSQPEATKCFQWQRNMRKVRGPPVS CIKRDSPIQCIQAIA ENRADAVTLDDGGFIYEAGLAPYKLRPVAAEVYGTERRQPRTHYY AVAVVKKGGSFQLNELQGLKSCHTGLR RTAGWNVPIGTLRPFLNWTGPPEPIEAAV

 Tel: 1-631-559-9269 1-516-512-3133

 Email: info@creative-biomart.com  Fax: 1-631-938-8127

 45-1 Ramsey Road, Shirley, NY 11967, USA

ARFFSASCVPGADKGQFPNLCRLCAGTGENKCAFSSQEPYF SYSGAFKCLRDGAG
 DVAFIRESTVFEDLSDEAERDEYELLCPDNTRKPVDFKFDCHLARVPSHAVVARSV
 NGKEDAIWNLLRQAQEKFGKDKSPKFQLFGSPSGQKDLLFKDSAIGFSRVPPRIDSG
 LYLGSYFTAQIN LRKSEEEVAARRARVWCAVGEQELRKCQWSGLSEGSVTCS
 SASTTEDCIALVLKGEADAMSLDGGYVY TAGKCGLPVLAENYKSQQSSDPDPNCV
 DRPVEGYLAVAVVRRSDTSLTWNSVKGKKSCHTAVDRTAGWN IPMGLLFNQTGSC
 KFDEYFSQSCAPGSDPRSNLCALCIGDEQGENKCEPNSNERYYGYTGAFRCLAEN
 AG DVAFVKDVTVLQNTDGNNEAWAKDLKLADFALLCLDGKRKPVTEARSCHLAM
 APNHAVVSRMDKVERLK QVLLHQQAKFGRNGSDCPDKFCLFQSETKNLLFNDNTE
 CLARLHGKTTYEKYLG PQYVAGITNLKCKSTS
 PLLEACEFLRKRTRTRPLEQKLISEEDLAANDILDYKDDDDKV

Purity > 80% as determined by SDS-PAGE and Coomassie blue staining.

Stability Stable for 12 months from the date of receipt of the product under proper storage and handling conditions. Avoid repeated freeze-thaw cycles.

Storage Store at -80 centigrade.

Concentration >50 ug/mL as determined by microplate BCA method.

Preparation Recombinant protein was captured through anti-DDK affinity column followed by conventional chromatography steps.

Protein Families Druggable Genome, Protease, Secreted Protein

Full Length Full L.

GENE INFORMATION

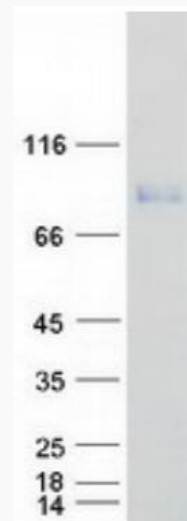
Gene Name [LTF lactotransferrin \[Homo sapiens \(human\) \]](#)

 Tel: 1-631-559-9269 1-516-512-3133

 Email: info@creative-biomart.com  Fax: 1-631-938-8127

 45-1 Ramsey Road, Shirley, NY 11967, USA

Official Symbol	LTF
Synonyms	LF; HLF2; GIG12; HEL110
Gene ID	4057
mRNA Refseq	NM_002343.6
Protein Refseq	NP_002334.2
MIM	150210
UniProt ID	P02788



Coomassie blue staining of purified LTF protein.

 Tel: 1-631-559-9269 1-516-512-3133

 Email: info@creative-biomart.com  Fax: 1-631-938-8127

 45-1 Ramsey Road, Shirley, NY 11967, USA