

Native Human lactoferrin

Cat. No. LTF-175H Lot. No. (See product label)

SPECIFICATION

Species	Human
Source	Hman Plasma
ProteinLength	Full length native Human lactoferrin
Description	<p>Lactoferrin is a glycoprotein present in most human mucosal secretions, including human milk. Lactoferrin is bacteriostatic in low iron media and, in some settings, bactericidal. Lactoferrin impairs ability of Shigella flexneri serotype 5 strain M90T to invade HeLa cells. To determine the mechanism by which lactoferrin decreases invasiveness of Shigella organisms, its effect on the major virulence proteins responsible for bacterial uptake by host cells was evaluated. Lactoferrin induced degradation of invasion plasmid antigens IpaB and, to a lesser extent, IpaC, the key proteins responsible for bacteria-directed phagocytosis by mammalian cells.</p>
Form	Liquid
Purity	>95% (SDS-PAGE)
Applications	Western blotting,ELISA,etc.
Storage	Aliquot and store at -20°C or -80°C. Avoid repeated freeze / thaw cycles.
Storage Buffer	Tris pH8.0

 Tel: 1-631-559-9269 1-516-512-3133

 Email: info@creative-biomart.com  Fax: 1-631-938-8127

 45-1 Ramsey Road, Shirley, NY 11967, USA

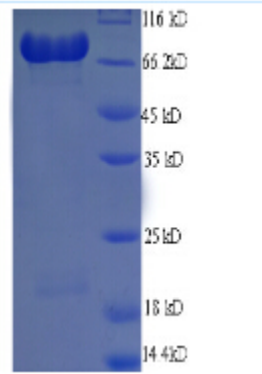
GENE INFORMATION

Gene Name	LTF lactotransferrin [Homo sapiens]
Official Symbol	LTF
Synonyms	LTF; lactotransferrin; HLF2; talalactoferrin; neutrophil lactoferrin; growth-inhibiting protein 12; LF; GIG12;
Gene ID	4057
mRNA Refseq	NM_001199149
Protein Refseq	NP_001186078
MIM	150210
UniProt ID	P02788
Chromosome Location	3p21.31
Pathway	Amyloids, organism-specific biosystem; Disease, organism-specific biosystem;
Function	ferric iron binding; heparin binding; metal ion binding; peptidase activity; protein binding; serine-type endopeptidase activity;

 Tel: 1-631-559-9269 1-516-512-3133

 Email: info@creative-biomart.com  Fax: 1-631-938-8127

 45-1 Ramsey Road, Shirley, NY 11967, USA



Tel: 1-631-559-9269 1-516-512-3133

Email: info@creative-biomart.com Fax: 1-631-938-8127

45-1 Ramsey Road, Shirley, NY 11967, USA