

Recombinant Human LTF protein(20-710 aa), N-MBP & C-His-tagged

Cat. No. LTF-2533H **Lot. No.** (See product label)

SPECIFICATION

Product Overview	Recombinant Human LTF protein(P02788)(20-710 aa), fused with N-terminal MBP tag and C-terminal His tag, was expressed in HEK293.
Species	Human
Source	HEK293
ProteinLength	20-710 aa
Form	0.15 M Phosphate buffered saline
Molecular Mass	118.5 kDa
Storage	Shipped on dry ice. Avoid repeated freeze-thaw cycles. Upon receipt, 2 days when stored at 2 to 8 °C after thawing. Up to 12 months when aliquoted and stored at -20 to -80°C.
Reconstitution	It is recommended that sterile water be added to the vial to prepare a stock solution of 0.2 ug/ul. Centrifuge the vial at 4°C before opening to recover the entire contents.
AA Sequence	GRRRSVQWCAVSQPEATKCFQWQRNMRKVRGPPVSCIKRDSPIQCIQAIENRAD AVTLDDGGFIYEAGLAPYKLRPVAAEVYGTERQPRTHYYAVAVVKKGGSFQLNELQG LKSCHTGLRRTAGWNVPIGTLRPFNLNWTGPPEPIEAAVARFFSASCVPGADKGGQFP NLCRLCAGTGENKCAFSSQEPYFSYSGAFKCLRDGAGDVAFIRESTVFEDLSDEAE

 Tel: 1-631-559-9269 1-516-512-3133

 Email: info@creative-biomart.com  Fax: 1-631-938-8127

 45-1 Ramsey Road, Shirley, NY 11967, USA



RDEYELLCPDNTRKPVDFKDKCHLARVPSHAVVARSVNGKEDAIWNLLRQAQEKFG
KDKSPKFQLFGSPSGQKDLLFKDSAIGFSRVPPRIDSGLYLGSGYFTAIQNLRKSEEE
VAARRARVWCAVGEQELRKCNQWSGLSEGSVTCSSASTTEDCIALVLKGEADAM
SLDGGYVYTAGKCGLVPLAENYKSQQSSDPDPCVDRPVEGYLAVAVVRRSDTS
LTWNSVKGKKSCHTAVDRTAGWNIPMGLLFNQTGSCKFDEYFSQSCAPGSDPRSN
LCALCIGDEQGENKCVPSNERYYYGYTGAFRCLAENAGDVAFVKDVTVLQNTDGN
NNEAWAKDLKLADFULLCLDGKRKPVTEARSCHLAMAPNHAVVSRMDKVERLKQVL
LHQQAKFGRNGSDCPDKFCLFQSETKNLLFNDNTECLARLHGKTTYEKYLGPPQYVA
GITNLKKCSTSPLEACEFLRK

GENE INFORMATION

Gene Name [LTF lactotransferrin \[Homo sapiens \]](#)

Official Symbol [LTF](#)

Synonyms LTF; lactotransferrin; HLF2; talalactoferrin; neutrophil lactoferrin; growth-inhibiting protein 12; LF; GIG12;

Gene ID [4057](#)

mRNA Refseq [NM_001199149](#)

Protein Refseq [NP_001186078](#)

MIM [150210](#)

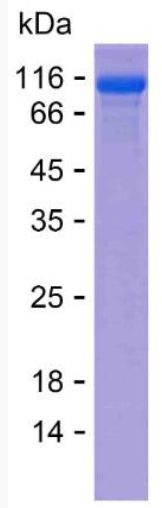
UniProt ID [P02788](#)

Tel: 1-631-559-9269 1-516-512-3133

Email: info@creative-biomart.com Fax: 1-631-938-8127

45-1 Ramsey Road, Shirley, NY 11967, USA

SDS-PAGE



 Tel: 1-631-559-9269 1-516-512-3133

 Email: info@creative-biomart.com  Fax: 1-631-938-8127

 45-1 Ramsey Road, Shirley, NY 11967, USA