

Recombinant Human LTF Protein (Met1-Lys710), N-His tagged

Cat. No. LTF-4468H Lot. No. (See product label)

SPECIFICATION

Product Overview	Recombinant human LTF (Met1-Lys710) fused with the N-His tag was expressed in E. coli.
Species	Human
Source	E.coli
ProteinLength	Met1-Lys710
Form	Lyophilized powder/frozen liquid
Molecular Mass	80.49 kDa
Purity	>90% as determined by SDS-PAGE.
Notes	For research use only.
Storage	Use a manual defrost freezer and avoid repeated freeze thaw cycles. Store at 2 to 8 centigrade for one week. Store at -20 to -80 centigrade for twelve months from the date of receipt.
Storage Buffer	0.01M PBS, pH 7.4, 0.02% NLS
Reconstitution	Reconstitute in sterile water for a stock solution.

 Tel: 1-631-559-9269 1-516-512-3133

 Email: info@creative-biomart.com  Fax: 1-631-938-8127

 45-1 Ramsey Road, Shirley, NY 11967, USA

Shipping

They are shipped out with dry ice/blue ice unless customers require otherwise.

GENE INFORMATION
Gene Name

LTF lactotransferrin [Homo sapiens (human)]

Official Symbol

LTF

Synonyms

LTF; lactotransferrin; HLF2; talalactoferrin; neutrophil lactoferrin; growth-inhibiting protein 12; LF; GIG12;

Gene ID

4057

mRNA Refseq

NM_001199149

Protein Refseq

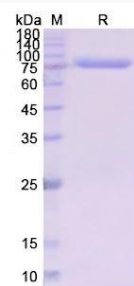
NP_001186078

MIM

150210

UniProt ID

P02788

SDS-PAGE


 Tel: 1-631-559-9269 1-516-512-3133

 Email: info@creative-biomart.com  Fax: 1-631-938-8127

 45-1 Ramsey Road, Shirley, NY 11967, USA