

Recombinant Human LTF Protein, GST-tagged

Cat. No. LTF-4587H Lot. No. (See product label)

SPECIFICATION

Product Overview	Human LTF full-length ORF (AAH22347.1, 1 a.a. - 711 a.a.) recombinant protein with GST-tag at N-terminal.
Species	Human
Source	Wheat Germ
Description	This gene is a member of the transferrin family of genes and its protein product is found in the secondary granules of neutrophils. The protein is a major iron-binding protein in milk and body secretions with an antimicrobial activity, making it an important component of the non-specific immune system. The protein demonstrates a broad spectrum of properties, including regulation of iron homeostasis, host defense against a broad range of microbial infections, anti-inflammatory activity, regulation of cellular growth and differentiation and protection against cancer development and metastasis. [provided by RefSeq]
Molecular Mass	104.7 kDa
AA Sequence	MKLVFLVLLFLGALGLCLAGRRRRSVQWCAVSQPEATKCFQWQRNMRKVCPPVSCIKRDSPIQCIQAIENRADAVTLDGGFIYEAGLAPYKLRPVAAEVYGTERQPRTHYYAVAVVKKGGSFQLNELQGLKSCHTGRRRTAGWNVPIGTLRPFLNWTGPPEPIEAAVARFFSASCVPGADKGQFPNLCRLCAGTGENKCAFSSQEPYFSYSGAFKCLRDGAGDVAFIRESTVFEDLSDEAERDEYELLCPDNTRKPVDFKFDCHLARVPSHAVVARSVNGKEDAIWNLLRQAQEKFGKDKSPKFQLFGSPSGQKDLLFKDSAIGFSRVPPRIDSGL

 Tel: 1-631-559-9269 1-516-512-3133

 Email: info@creative-biomart.com  Fax: 1-631-938-8127

 45-1 Ramsey Road, Shirley, NY 11967, USA

YLGSGYFTAIQNLRKSEEEVAARRARVVWCAVGEQELRKCQNQWSGLSEGSVTCSS
 ASTTEDCIALVLKGEADAMSLDGGYVYTAGKCGLVPVLAENYKSQQSSDPDNCVD
 RPVEGYLAVAVVRRSDTSLTWNSVKGKKSCHTAVDRTAGWNIPMGLLFNQTGSCK
 FDEYFSQSCAPGSDPRSNLALCALCIGDEQGENKCVPSNERYYYGYTGAFRCLAENA
 GDVAFVKDVTVLQNTDGNNNEAWAKDLKLADFALLCLDGKRKPVTEARSCHLAMAP
 NHAVVSRMDKVERLKQVLLHQQAKFGRNGSDCPDKFCLFQSETKNLLFNDNTECLA
 RLHGKTTYEKYLGPPQYVAGITNLKKCSTSPLEACEFLRK

Applications	Enzyme-linked Immunoabsorbent Assay Western Blot (Recombinant protein) Antibody Production Protein Array
Notes	Best use within three months from the date of receipt of this protein.
Storage	Store at -80 centigrade. Aliquot to avoid repeated freezing and thawing.
Storage Buffer	50 mM Tris-HCl, 10 mM reduced Glutathione, pH=8.0 in the elution buffer.

GENE INFORMATION

Gene Name	LTF lactotransferrin [Homo sapiens]
Official Symbol	LTF
Synonyms	LTF; lactotransferrin; HLF2; talalactoferrin; neutrophil lactoferrin; growth-inhibiting protein 12; LF; GIG12;
Gene ID	4057
mRNA Refseq	NM_001199149

 Tel: 1-631-559-9269 1-516-512-3133

 Email: info@creative-biomart.com  Fax: 1-631-938-8127

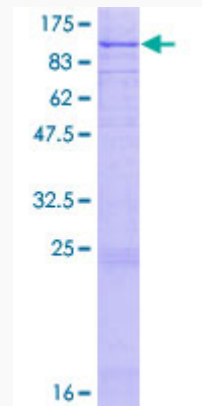
 45-1 Ramsey Road, Shirley, NY 11967, USA

Protein Refseq NP_001186078

MIM 150210

UniProt ID P02788

**Quality Control
Testing**



12.5% SDS-PAGE Stained with Coomassie Blue

 Tel: 1-631-559-9269 1-516-512-3133

 Email: info@creative-biomart.com  Fax: 1-631-938-8127

 45-1 Ramsey Road, Shirley, NY 11967, USA