

# Recombinant Human LTF Protein, Myc/DDK-tagged, C13 and N15-labeled

**Cat. No.** LTF-5074H    **Lot. No.** (See product label)

## SPECIFICATION

|                         |   |
|-------------------------|---|
| <b>Product Overview</b> | LTF MS Standard C13 and N15-labeled recombinant protein (NP_002334) with a C-terminal MYC/DDK tag, was expressed in HEK293 cells.   |
| <b>Species</b>          | Human   |
| <b>Source</b>           | HEK293  |
| <b>Description</b>      | This gene is a member of the transferrin family of genes and its protein product is found in the secondary granules of neutrophils. The protein is a major iron-binding protein in milk and body secretions with an antimicrobial activity, making it an important component of the non-specific immune system. The protein demonstrates a broad spectrum of properties, including regulation of iron homeostasis, host defense against a broad range of microbial infections, anti-inflammatory activity, regulation of cellular growth and differentiation and protection against cancer development and metastasis. Antimicrobial, antiviral, antifungal and antiparasitic activity has been found for this protein and its peptides. Alternatively spliced transcript variants encoding different isoforms have been found for this gene. |
| <b>Molecular Mass</b>   | 78.37 kDa   |
| <b>AA Sequence</b>      | MKLVFLVLLFLGALGLCLAGRRRRSVQWCAVSQPEATKCFQWQRNMRKVRGPPVS<br>CIKRDSPIQCIQAIENRADAVTLDDGGFIYEAGLAPYKLRPVAAEVYGTERQPRTHYY<br>AVAVVKKGGSFQLNELQGLKSCHTGLRRTAGWNVPIGTLRPFLNWTGPPEPIEAAV   |

 Tel: 1-631-559-9269    1-516-512-3133

 Email: [info@creative-biomart.com](mailto:info@creative-biomart.com)     Fax: 1-631-938-8127

 45-1 Ramsey Road, Shirley, NY 11967, USA

ARFFSASCVPGADKGQFPNLCRLCAGTGENKCAFSSQEPYFSYSGAFKCLRDGAG  
 DVAFIRESTVFEDLSDEAERDEYELLCPDNTRKPVDFKFDCHLARVPSHAVVARSVN  
 GKEDAIWNLLRQAQEKFGKDKSPKFQLFGSPSGQKDLLFKDSAIGFSRVPPRIDSGL  
 YLGSYFTAQNLKSEEEVAARRARVVWCAVGEQELRKCQNSGLSEGSVTCSS  
 ASTTEDCIALVLKGEADAMSLDGGYVYTAGKCGLPVLAENYKSSQSSDPDPNCVD  
 RPVEGYLAVAVRRSDTSLTWNSVKGKKSCHTAVDRTAGWNIPMGLLFNQTGSK  
 FDEYFSQSCAPGSDPRSNLALCALCIGDEQGENKCEPNSNERYYGYTGAFRCLAENA  
 GDVAFVKDVTVLQNTDGNNEAWAKDLKLDLDFALLCLDGKRKPVTEARSCHLAMAP  
 NHAVVSRMDKVERLKQVLLHQQAKFGRNGSDCPDKFCLFQSETKNLLFNDNTECLA  
 RLHGKTTYEKYLGPPQYVAGITNLKCKCSTSPLEACEFLRKRTRTRPLEQKLISEEDLAA  
 NDILDYKDDDDKV

**Purity** > 80% as determined by SDS-PAGE and Coomassie blue staining

**Stability** Stable for 3 months from receipt of products under proper storage and handling conditions.

**Storage** Store at -80 centigrade. Avoid repeated freeze-thaw cycles.

**Concentration** 50 µg/mL as determined by BCA

**Storage Buffer** 100 mM glycine, 25 mM Tris-HCl, pH 7.3.

## GENE INFORMATION

**Gene Name** LTF lactotransferrin [ *Homo sapiens* (human) ]

**Official Symbol** LTF

**Synonyms** LTF; lactotransferrin; HLF2; talalactoferrin; neutrophil lactoferrin; growth-inhibiting protein 12; LF; GIG12;

 Tel: 1-631-559-9269 1-516-512-3133

 Email: [info@creative-biomart.com](mailto:info@creative-biomart.com)  Fax: 1-631-938-8127

 45-1 Ramsey Road, Shirley, NY 11967, USA

**Gene ID** 4057

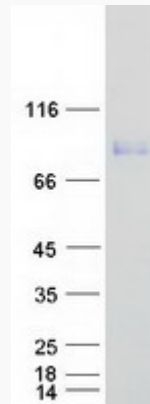
**mRNA Refseq** NM\_002343

**Protein Refseq** NP\_002334

**MIM** 150210

**UniProt ID** P02788

**SDS-PAGE**



 Tel: 1-631-559-9269 1-516-512-3133

 Email: [info@creative-biomart.com](mailto:info@creative-biomart.com)  Fax: 1-631-938-8127

 45-1 Ramsey Road, Shirley, NY 11967, USA