

Recombinant Human lactotransferrin Protein, HA tagged

Cat. No. LTF-53H Lot. No. (See product label)

SPECIFICATION

Product Overview	Recombinant Human LTF Protein (20-710aa) with C-HA and N-Glu-Ala was expressed in Yeast (animal free media and environment).
Species	Human
Source	Yeast
ProteinLength	20-710aa
Description	<p>This gene is a member of the transferrin family of genes and its protein product is found in the secondary granules of neutrophils. The protein is a major iron-binding protein in milk and body secretions with an antimicrobial activity, making it an important component of the non-specific immune system. The protein demonstrates a broad spectrum of properties, including regulation of iron homeostasis, host defense against a broad range of microbial infections, anti-inflammatory activity, regulation of cellular growth and differentiation and protection against cancer development and metastasis. Antimicrobial, antiviral, antifungal and antiparasitic activity has been found for this protein and its peptides. Activity against both DNA and RNA viruses has been found, including activity against SARS-CoV-2, and HIV.</p>
Tag	C-HA; N-Glu-Ala
Form	Lyophilized
Molecular Mass	77.3 kDa

 Tel: 1-631-559-9269 1-516-512-3133

 Email: info@creative-biomart.com  Fax: 1-631-938-8127

 45-1 Ramsey Road, Shirley, NY 11967, USA

AA Sequence

(EA)GRRRSVQWCAVSQPEATKCFQWQRNMRKVRGPPVSCIKRDSPIQCIQAI AEN
 RADAVTLDGGFIYEAGLAPYKLRPVAAEVYGTERQPRTHYYAVAVVKKGGSFQ LNE
 LQGLKSCHTGLRRTAGWNVPIGTLRPFLNWTGPPEPIEAAVARFFSASCVPGADKG
 QFPNLCRLCAGTGENKCAFSSQEPYFSYSGAFKCLRDGAGDVAFIRESTVFEDLSD
 EAERDEYELLCPDNTRKPVDFKFDCHLARVPSHAVVARSVNGKEDAIWNLLRQAQE
 KFGKDKSPKFQLFGSPSGQKDLLFKDSAIGFSRVPPRIDSGLYLGSGYFTAIQNLRS
 EEEVAARRARVVWCAVGEQELRKCENQWSGLSEGSVTCSSASTTEDCIALVLKGEA
 DAMSLDGGYVYTAGKCGLVPLAENYKSSQSSDPDPCVDRPVEGYLAVAVVRRS
 DTSLTWNSVKGKKSCHTAVDRTAGWNIPMGLLFNQTGSCKFDEYFSQSCAPGSDP
 RSNLCALCIGDEQGENKCVPSNERYYYGYTGAFRCLAENAGDVAFVKDVTVLQNTD
 GNNNEAWAKDLKLADFALLCLDGKRKPVTEARSCHLAMAPNHAVVSRMDKVERLK
 QVLLHQQAKFGRNGSDCPDKFCLFQSETKNLLFNDNTECLARLHGKTTYEKYLG PQ
 YVAGITNLKKCSTSPLEACEFLRKYPYDVPDYA

Endotoxin

< 0.2 EU/μg of protein as determined by the LAL method.

Purity

0.95

Storage

Stable for at least one year at -20 centigrade. Upon reconstitution LF can be stored at +4 centigrade for 1 day or at -20 centigrade for 6 months.

Concentration

100 μg/μL

Storage Buffer

Phosphate-buffered saline (PBS), pH 7.4

Reconstitution

Spin the vial briefly, add distilled sterile water.

GENE INFORMATION

Gene Name

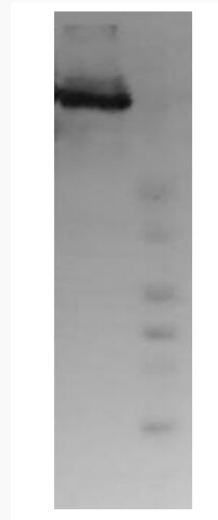
LTF lactotransferrin [Homo sapiens (human)]

 Tel: 1-631-559-9269 1-516-512-3133

 Email: info@creative-biomart.com  Fax: 1-631-938-8127

 45-1 Ramsey Road, Shirley, NY 11967, USA

Official Symbol	LTF
Synonyms	LTF; lactotransferrin; HLF2; talalactoferrin; neutrophil lactoferrin; growth-inhibiting protein 12; LF; GIG12
Gene ID	4057
mRNA Refseq	NM_001199149
Protein Refseq	NP_001186078
MIM	150210
UniProt ID	P02788

SDS-PAGE

Lactoferrin was loaded and resolved on 8-22 % SDS-PAGE and stained with Coomassie G-250.

 Tel: 1-631-559-9269 1-516-512-3133

 Email: info@creative-biomart.com  Fax: 1-631-938-8127

 45-1 Ramsey Road, Shirley, NY 11967, USA