

Recombinant Pig LTF protein, His & GST-tagged

Cat. No. LTF-7671P Lot. No. (See product label)

SPECIFICATION

Product Overview	Recombinant Pig LTF aa. (Val25~Glu348 (Accession # P14632)) fused with N-terminal His & GST tag was produced in E. coli cells.
Species	Pig
Source	E.coli
ProteinLength	Val25~Glu348
Form	Freeze-dried powder
Molecular Mass	Predicted Molecular Mass: 68.0kDa
Endotoxin	<1.0EU per 1g (determined by the LAL method)
Purity	>95%
Characteristic	The isoelectric point is 8.7.
Applications	SDS-PAGE; WB; ELISA; IP.
Stability	The thermal stability is described by the loss rate. The loss rate was determined by accelerated thermal degradation test, that is, incubate the protein at 37°C for 48h, and no obvious degradation and precipitation were observed. The loss rate is less than 5% within the expiration date under appropriate storage condition.

 Tel: 1-631-559-9269 1-516-512-3133

 Email: info@creative-biomart.com  Fax: 1-631-938-8127

 45-1 Ramsey Road, Shirley, NY 11967, USA

Storage	Avoid repeated freeze/thaw cycles. Store at 2-8°C for one month. Aliquot and store at -80°C for 12 months.
Storage buffer	Supplied as lyophilized form in 20mM Tris, 500mM NaCl, pH8.0, containing 1mM EDTA, 1mM DTT, 0.01% sarcosyl, 5% trehalose, and preservative.
Reconstitution	Reconstitute in sterile PBS, pH7.2-pH7.4.

GENE INFORMATION

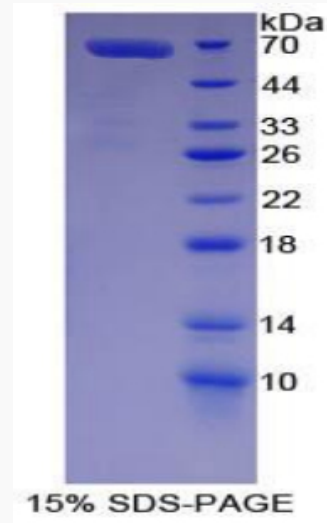
Gene Name	LTF lactotransferrin [<i>Sus scrofa</i> (pig)]
Official Symbol	LTF
Synonyms	PLF; lactotransferrin; lactoferrin
Gene ID	397649
mRNA Refseq	NM_214362.2
Protein Refseq	NP_999527.2
UniProt ID	P14632

 Tel: 1-631-559-9269 1-516-512-3133

 Email: info@creative-biomart.com  Fax: 1-631-938-8127

 45-1 Ramsey Road, Shirley, NY 11967, USA

SDS-PAGE



 Tel: 1-631-559-9269 1-516-512-3133

 Email: info@creative-biomart.com  Fax: 1-631-938-8127

 45-1 Ramsey Road, Shirley, NY 11967, USA