

## Recombinant Human LTV1 Protein, GST-tagged

**Cat. No.** LTV1-4584H    **Lot. No.** (See product label)

### SPECIFICATION

|                         |  |
|-------------------------|--|
| <b>Product Overview</b> | Human LTV1 full-length ORF ( NP_116249.2, 1 a.a. - 475 a.a.) recombinant protein with GST-tag at N-terminal.   |
| <b>Species</b>          | Human  |
| <b>Source</b>           | Wheat Germ   |
| <b>Description</b>      | LTV1 (LTV1 Ribosome Biogenesis Factor) is a Protein Coding gene. Among its related pathways are rRNA processing in the nucleus and cytosol and Gene Expression. An important paralog of this gene is ENSG00000280148.  |
| <b>Molecular Mass</b>   | 81.3 kDa   |
| <b>AA Sequence</b>      | MPHRKKKPFIEKKKAVSFHLVHRSQRDPLAADESAPQRVLLPTQKIDNEERRAEQRK<br>YGVFFDDDDYDLQHLKEPSGSELIPSSSTFSAHNRREEKEETLVIPSTGIKLPSSVFA<br>SEFEEDVGLLNKAAPVSGPRLDFDPDIVAALDDDFDFDDPDNLLEDDFILQANKATG<br>EEEGMDIQKSENEDDSEWEDVDDEKGDSDNDYDSAGLLSDEDCMSVPGKTHRAIA<br>DHLFWSEETKSRFTEYSMTSSVMRRNEQLTLHDERFEKFYEQYDDDEIGALDNAEL<br>EGSIQVDSNRLQEVLDYDYKEKAENCVKLNTLEPLEDQDLPMNELDESEEEEMITVV<br>LEEAKEKWDCECISTYSNLYNHPQLIKYQPKPKQIRISSKTGIPLNVLPKKGLTAKQT<br>ERIQMINGSDLPKVSTQPRSKNESKEDKRARKQAIKEERKERRVEKKANKLAFKLEK<br>RRQEKELLNLKKNVEGLKL |
| <b>Applications</b>     | Enzyme-linked Immunoabsorbent Assay<br>Western Blot (Recombinant protein)  |

 Tel: 1-631-559-9269    1-516-512-3133

 Email: [info@creative-biomart.com](mailto:info@creative-biomart.com)     Fax: 1-631-938-8127

 45-1 Ramsey Road, Shirley, NY 11967, USA

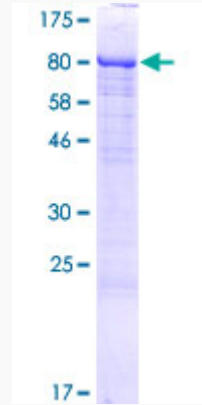
|                         |  |
|-------------------------|--|
|                         | Antibody Production<br>Protein Array                                     |
| <b>Notes</b>            | Best use within three months from the date of receipt of this protein.   |
| <b>Storage</b>          | Store at -80 centigrade. Aliquot to avoid repeated freezing and thawing. |
| <b>Storage Buffer</b>   | 50 mM Tris-HCl, 10 mM reduced Glutathione, pH=8.0 in the elution buffer. |
| <b>GENE INFORMATION</b> |  |
| <b>Gene Name</b>        | LTV1 LTV1 homolog ( <i>S. cerevisiae</i> ) [ <i>Homo sapiens</i> ]       |
| <b>Official Symbol</b>  | LTV1   |
| <b>Synonyms</b>         | C6orf93; dJ468K18.4; LTV1; LTV1 homolog ( <i>S. cerevisiae</i> )         |
| <b>Gene ID</b>          | 84946  |
| <b>mRNA Refseq</b>      | NM_032860  |
| <b>Protein Refseq</b>   | NP_116249  |
| <b>UniProt ID</b>       | Q96GA3   |

 Tel: 1-631-559-9269 1-516-512-3133

 Email: [info@creative-biomart.com](mailto:info@creative-biomart.com)  Fax: 1-631-938-8127

 45-1 Ramsey Road, Shirley, NY 11967, USA

**Quality Control  
Testing**



12.5% SDS-PAGE Stained with Coomassie Blue

 Tel: 1-631-559-9269 1-516-512-3133

 Email: [info@creative-biomart.com](mailto:info@creative-biomart.com)  Fax: 1-631-938-8127

 45-1 Ramsey Road, Shirley, NY 11967, USA