

## Recombinant Human LUM protein, His-tagged

**Cat. No.** LUM-154H    **Lot. No.** (See product label)

### SPECIFICATION

<b>Product Overview</b>	Recombinant Human LUM (Gln19-Asn338) protein was fused to His-tag at C-terminus and expressed in human 293 cells (HEK293).
<b>Species</b>	Human
<b>Source</b>	HEK293
<b>ProteinLength</b>	Gln19-Asn338
<b>Description</b>	Lumican (LUM) is also known as Keratan sulfate proteoglycan lumican, KSPG lumican, LDC and SLRR2D, which belongs to the small leucine-rich proteoglycan (SLRP) family and SLRP class II subfamily. LUM /Lumican is present in the extracellular matrix of human articular cartilage at all ages, although its abundance is far greater in the adult. In the adult cartilage LUM/Lumican exists predominantly in a glycoprotein form lacking keratan sulfate, whereas the juvenile form of the molecule is a proteoglycan. LUM participates in the maintenance of tissue homeostasis and modulates cellular functions including cell proliferation, migration, and differentiation. The expression of LUM has been correlated to the growth and metastasis of various malignancies.
<b>Predicted N Terminal</b>	Gln19
<b>Form</b>	Lyophilized from 0.22 µm filtered solution in PBS, pH7.4, 10% trehalose.
<b>Molecular Mass</b>	The protein has a calculated MW of 37.5 kDa. The protein migrates as 50-65 kDa

 Tel: 1-631-559-9269    1-516-512-3133

 Email: [info@creative-biomart.com](mailto:info@creative-biomart.com)     Fax: 1-631-938-8127

 45-1 Ramsey Road, Shirley, NY 11967, USA

under reducing (R) condition (SDS-PAGE) due to glycosylation.

**Endotoxin** Less than 1.0 EU per µg by the LAL method.

**Purity** >95% as determined by reduced SDS-PAGE.

**Storage**

For long term storage, the product should be stored at lyophilized state at -20 centigrade or lower.

Please avoid repeated freeze-thaw cycles.

This product is stable after storage at:

- 20 to -70 centigrade for 12 months in lyophilized state;
- 70 centigrade for 3 months under sterile conditions after reconstitution.

**Reconstitution** It is recommended that sterile water be added to the vial to prepare a stock solution of 0.2 ug/ul. Centrifuge the vial at 4°C before opening to recover the entire contents.

## GENE INFORMATION

**Gene Name** LUM

**Official Symbol** LUM

**Synonyms** LUM; lumican; LDC; lumican proteoglycan; SLRR2D; KSPG lumican; keratan sulfate proteoglycan lumican

**Gene ID** 4060

**mRNA Refseq** NM\_002345

**Protein Refseq** NP\_002336

 Tel: 1-631-559-9269 1-516-512-3133

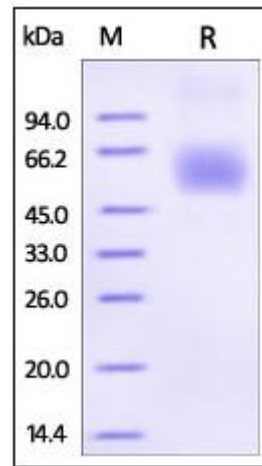
 Email: [info@creative-biomart.com](mailto:info@creative-biomart.com)  Fax: 1-631-938-8127

 45-1 Ramsey Road, Shirley, NY 11967, USA

**MIM** 600616

**UniProt ID** P51884

**SDS-PAGE of LUM-154H**



Human Lumican, His Tag on SDS-PAGE under reducing (R) condition. The gel was stained overnight with Coomassie Blue. The purity of the protein is greater than 95%.

 Tel: 1-631-559-9269 1-516-512-3133

 Email: [info@creative-biomart.com](mailto:info@creative-biomart.com)  Fax: 1-631-938-8127

 45-1 Ramsey Road, Shirley, NY 11967, USA