

Recombinant Rat LUM Protein (19-338 aa), His-tagged

Cat. No. LUM-1936R **Lot. No.** (See product label)

SPECIFICATION

Product Overview	Recombinant Rat LUM Protein (19-338 aa) is produced by E. coli expression system. This protein is fused with a 6xHis tag at the N-terminal. Research Area: Signal Transduction. Protein Description: Full Length of Mature Protein.
Species	Rat
Source	E.coli
ProteinLength	19-338 aa
Form	Tris-based buffer,50% glycerol
Molecular Mass	40.5 kDa
AA Sequence	QYYDYDAPLFMYGELSPNCAPECNCPHSYPTAMYCDDLKLSVPMVPPGIKYLILR NNQIDHIDEKAFENVTDLQWLILDHNLLENSKIKGKVFSLKQLKKLHINYNNLTESVG PLPKSLQDLQLANNKISKLGSDGLVNLTFIYLQHNQLKEEAVSASLKGLKSLEYLDL SFNQMSKLPAGLPTSLLTLYLDNNKITNIPDEYFNRFTGLQYLRLSHNELADSGVPGN SFNISSLELDLSYNKLSIPTVNENLENYYLEVKNLEKFDVKSFCILGPLSYSKIKHL RLDGNPLTQSSLPPDMYECLRVANEITVN
Purity	> 90% as determined by SDS-PAGE.
Notes	Repeated freezing and thawing is not recommended. Store working aliquots at 4 centigrade for up to one week.

 Tel: 1-631-559-9269 1-516-512-3133

 Email: info@creative-biomart.com  Fax: 1-631-938-8127

 45-1 Ramsey Road, Shirley, NY 11967, USA

Storage The shelf life is related to many factors, storage state, buffer ingredients, storage temperature and the stability of the protein itself. Generally, the shelf life of liquid form is 6 months at -20 centigrade/-80 centigrade. The shelf life of lyophilized form is 12 months at -20 centigrade/-80 centigrade.

Concentration A hardcopy of COA with reconstitution instruction is sent along with the products.

GENE INFORMATION

Gene Name Lum lumican [*Rattus norvegicus*]

Official Symbol LUM

Synonyms LUM; lumican; KSPG lumican; keratan sulfate proteoglycan lumican;

Gene ID 81682

mRNA Refseq NM_031050

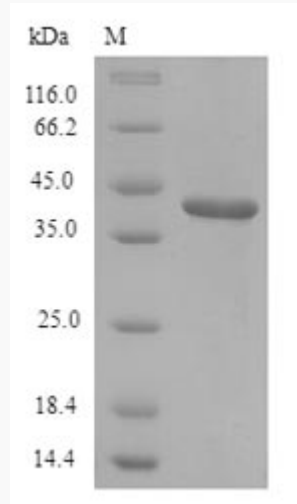
Protein Refseq NP_112312

UniProt ID P51886

 Tel: 1-631-559-9269 1-516-512-3133

 Email: info@creative-biomart.com  Fax: 1-631-938-8127

 45-1 Ramsey Road, Shirley, NY 11967, USA



(Tris-Glycine gel) Discontinuous SDS-PAGE (reduced) with 5% enrichment gel and 15% separation gel.

 Tel: 1-631-559-9269 1-516-512-3133

 Email: info@creative-biomart.com  Fax: 1-631-938-8127

 45-1 Ramsey Road, Shirley, NY 11967, USA