

Recombinant Human LUM protein, His-tagged

Cat. No. LUM-32H Lot. No. (See product label)

SPECIFICATION

Product Overview	Recombinant human LUM, fused to His-tag at C-terminus, was expressed in insect cell and purified by using conventional chromatography techniques.
Species	Human
Source	Insect Cells
Description	LUM, also known as lumican, is a member of the class II small leucine-rich proteoglycan family. It is a major component of the cornea, dermal, and muscle connective tissues. It regulates collagenous matrix assembly as a keratan sulfate proteoglycan in the cornea and is also present in the connective tissues of other organs and embryonic corneal stroma as a glycoprotein. It may regulate collagen fibril organization and circumferential growth, corneal transparency, and epithelial cell migration and tissue repair.
Form	Liquid. In Phosphate Buffered Saline (pH 7.4) containing 10% glycerol.
Molecular Mass	37.7kDa (329aa) 40-57kDa (SDS-PAGE under reducing conditions)
AA Sequence	ADLQYYDYDF PLSIYGQSSP NCAPECNCPE SYPSAMYCDE LKLKSVPMVP PGIKYLYLRN NQIDHIDEKA FENVTDLQWL ILDHNLLENSKIKGRVFSKL KQLKKLHINH NNLTESVGPL PKSLEDLQLT HNKITKLGSF EGLVNLTFIH LQHNRLKEDA VSAAFKGLKS LEYLDLSFNQIARLPGLPV SLLTLYLDNN KISNIPDEYF KRFNALQYLR LSHNELADSG IPGNSFNVSS LVELDLSYNK

 Tel: 1-631-559-9269 1-516-512-3133

 Email: info@creative-biomart.com  Fax: 1-631-938-8127

 45-1 Ramsey Road, Shirley, NY 11967, USA

LKNIPTVNEN LENYYLEVNQLEKFDIKSFC KILGPLSYSK IKHLRLDGNR
ISETSLPPDM YECLRVANEV TLNHHHHHHH

Endotoxin < 1.0 EU per 1 microgram of protein (determined by LAL method)

Purity > 95% by SDS - PAGE

Storage Can be stored at +4centigrade short term (1-2 weeks). For long term storage, aliquot and store at -20centigrade or -70centigrade. Avoid repeated freezing and thawing cycles.

Concentration 0.5mg/ml (determined by Absorbance at 280nm)

GENE INFORMATION

Gene Name LUM lumican [Homo sapiens]

Official Symbol LUM

Synonyms LUM; lumican; LDC; lumican proteoglycan; SLRR2D; KSPG lumican; keratan sulfate proteoglycan lumican;

Gene ID 4060

mRNA Refseq NM_002345

Protein Refseq NP_002336

MIM 600616

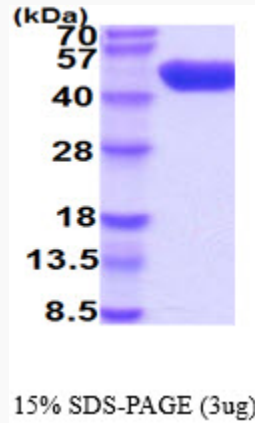
UniProt ID P51884

 Tel: 1-631-559-9269 1-516-512-3133

 Email: info@creative-biomart.com  Fax: 1-631-938-8127

 45-1 Ramsey Road, Shirley, NY 11967, USA

Chromosome Location	12q21.3-q22
Function	collagen binding; extracellular matrix structural constituent;



 Tel: 1-631-559-9269 1-516-512-3133

 Email: info@creative-biomart.com  Fax: 1-631-938-8127

 45-1 Ramsey Road, Shirley, NY 11967, USA