

Recombinant Human LXN Protein, GST-tagged

Cat. No. LXN-4573H Lot. No. (See product label)

SPECIFICATION

Product Overview	Human LXN full-length ORF (NP_064554.2, 1 a.a. - 222 a.a.) recombinant protein with GST-tag at N-terminal.
Species	Human
Source	Wheat Germ
Description	This gene encodes the only known protein inhibitor of zinc-dependent metalloproteinases. [provided by RefSeq]
Molecular Mass	52.2 kDa
AA Sequence	MEIPPTNYPASRAALVAQNYINYQQGTPHRVFEVQKVKQASMEDIPGRGHKYRLKF AVEEIIQKQVKVNCTAEVLYPSTGQETAPEVNFTFEGETGKNPDEEDNTFYQRLKSM KEPLEAQNIPDNFGNVSPEMTLVLHLAWVACGYIHWQNSTEDTWYKMKVIQTVKQV QRNDDFIELDYTILLHNIASQEIIPWQMQLWHPQYGTKVKHNSRLPKEVQLE
Applications	Enzyme-linked Immunoabsorbent Assay Western Blot (Recombinant protein) Antibody Production Protein Array
Notes	Best use within three months from the date of receipt of this protein.
Storage	Store at -80 centigrade. Aliquot to avoid repeated freezing and thawing.

 Tel: 1-631-559-9269 1-516-512-3133

 Email: info@creative-biomart.com  Fax: 1-631-938-8127

 45-1 Ramsey Road, Shirley, NY 11967, USA

Storage Buffer 50 mM Tris-HCl, 10 mM reduced Glutathione, pH=8.0 in the elution buffer.

GENE INFORMATION

Gene Name LXN latexin [Homo sapiens]

Official Symbol LXN

Synonyms LXN; latexin; MUM; tissue carboxypeptidase inhibitor; endogenous carboxypeptidase inhibitor; ECI; TCI;

Gene ID 56925

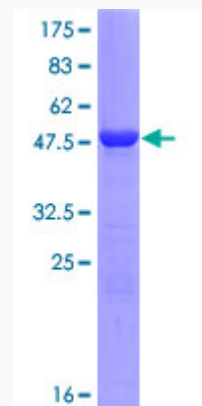
mRNA Refseq NM_020169

Protein Refseq NP_064554

MIM 609305

UniProt ID Q9BS40

Quality Control Testing



 Tel: 1-631-559-9269 1-516-512-3133

 Email: info@creative-biomart.com  Fax: 1-631-938-8127

 45-1 Ramsey Road, Shirley, NY 11967, USA



12.5% SDS-PAGE Stained with Coomassie Blue

 Tel: 1-631-559-9269 1-516-512-3133

 Email: info@creative-biomart.com  Fax: 1-631-938-8127

 45-1 Ramsey Road, Shirley, NY 11967, USA