

Recombinant Human LY6D Protein, GST-tagged

Cat. No. LY6D-4571H Lot. No. (See product label)

SPECIFICATION

Product Overview	Human LY6D full-length ORF (AAH31330, 21 a.a. - 128 a.a.) recombinant protein with GST-tag at N-terminal.
Species	Human
Source	Wheat Germ
Description	LY6D (Lymphocyte Antigen 6 Family Member D) is a Protein Coding gene. Diseases associated with LY6D include Squamous Cell Carcinoma, Head And Neck. Among its related pathways are B Cell Development Pathways and Post-translational modification- synthesis of GPI-anchored proteins.
Molecular Mass	37.62 kDa
AA Sequence	LRCHVCTSSSNCKHSVVCPCASSRFCKTTNTVEPLRGNLVKKDCAESCTPSYTLQGQ VSSGTSSTQCCQEDLCNEKLHNAAPTRTALAHSALSGLLALLAVILAPSL
Applications	Enzyme-linked Immunoabsorbent Assay Western Blot (Recombinant protein) Antibody Production Protein Array
Notes	Best use within three months from the date of receipt of this protein.
Storage	Store at -80 centigrade. Aliquot to avoid repeated freezing and thawing.

 Tel: 1-631-559-9269 1-516-512-3133

 Email: info@creative-biomart.com  Fax: 1-631-938-8127

 45-1 Ramsey Road, Shirley, NY 11967, USA

Storage Buffer 50 mM Tris-HCl, 10 mM reduced Glutathione, pH=8.0 in the elution buffer.

GENE INFORMATION

Gene Name LY6D lymphocyte antigen 6 complex, locus D [Homo sapiens]

Official Symbol LY6D

Synonyms LY6D; lymphocyte antigen 6 complex, locus D; lymphocyte antigen 6D; E48; e48 antigen; Ly-6D;

Gene ID 8581

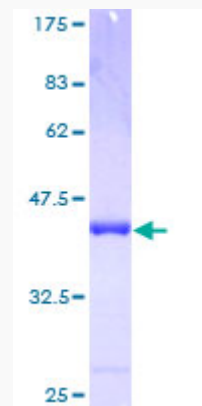
mRNA Refseq NM_003695

Protein Refseq NP_003686

MIM 606204

UniProt ID Q14210

Quality Control Testing



Tel: 1-631-559-9269 1-516-512-3133

Email: info@creative-biomart.com Fax: 1-631-938-8127

45-1 Ramsey Road, Shirley, NY 11967, USA



12.5% SDS-PAGE Stained with Coomassie Blue

 Tel: 1-631-559-9269 1-516-512-3133

 Email: info@creative-biomart.com  Fax: 1-631-938-8127

 45-1 Ramsey Road, Shirley, NY 11967, USA