

Active Recombinant Human LY6D Protein (Leu21-Asn98), C-hFc tagged

Cat. No. LY6D-48H Lot. No. (See product label)

SPECIFICATION

Product Overview	Recombinant Human LY6D Protein (Leu21-Asn98) with a Human IgG1 (Pro100-Lys330) Fc tag at C-terminus was expressed in Human embryonic kidney cell.
Species	Human
Source	HEK293
ProteinLength	Leu21-Asn98
Description	Predicted to be involved in lymphocyte differentiation. Predicted to act upstream of or within response to stilbenoid. Predicted to be located in extracellular region and plasma membrane. Predicted to be active in cell surface.
Form	Disulfide-linked homodimer
Bio-activity	Measured by its ability to inhibit anti-CD3 antibody induced IL-2 or IFN-gamma secretion by human T cells. The ED50 for this effect is 1-7.5 µg/mL.
Molecular Mass	Predicted Molecular Mass: 35 kDa SDS-PAGE: 38-46 kDa, under reducing conditions
N-terminal Sequence Analysis	Leu21

 Tel: 1-631-559-9269 1-516-512-3133

 Email: info@creative-biomart.com  Fax: 1-631-938-8127

 45-1 Ramsey Road, Shirley, NY 11967, USA

Endotoxin	< 0.10 EU/μg of the protein by the LAL method.
Purity	> 95%, by SDS-PAGE visualized with Silver Staining and quantitative densitometry by Coomassie® Blue Staining.
Storage	Use a manual defrost freezer and avoid repeated freeze-thaw cycles. 12 months from date of receipt, -20 to -70 centigrade as supplied. 1 month, 2 to 8 centigrade under sterile conditions after reconstitution. 3 months, -20 to -70 centigrade under sterile conditions after reconstitution.
Storage Buffer	Lyophilized from a 0.2 μm filtered solution in PBS with Trehalose.
Reconstitution	Reconstitute at 200 μg/mL in PBS.
Shipping	The product is shipped at ambient temperature.

GENE INFORMATION

Gene Name	LY6D lymphocyte antigen 6 family member D [Homo sapiens (human)]
Official Symbol	LY6D
Synonyms	LY6D; lymphocyte antigen 6 family member D; E48; Ly-6D; lymphocyte antigen 6D; e48 antigen; lymphocyte antigen 6 complex, locus D
Gene ID	8581
mRNA Refseq	NM_003695
Protein Refseq	NP_003686

 Tel: 1-631-559-9269 1-516-512-3133

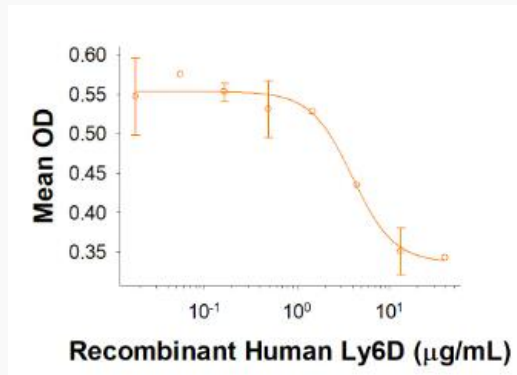
 Email: info@creative-biomart.com  Fax: 1-631-938-8127

 45-1 Ramsey Road, Shirley, NY 11967, USA

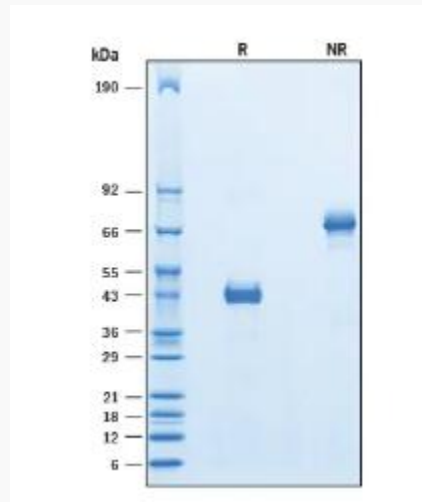
MIM 606204

UniProt ID Q14210

Binding Activity



SDS-PAGE



 Tel: 1-631-559-9269 1-516-512-3133

 Email: info@creative-biomart.com  Fax: 1-631-938-8127

 45-1 Ramsey Road, Shirley, NY 11967, USA