

## Recombinant Human LY6G5B Protein, His tagged

Cat. No. LY6G5B-001H Lot. No. (See product label)

### SPECIFICATION

<b>Product Overview</b>	Recombinant Human LY6G5B Protein with His tag was expressed in E. coli.
<b>Species</b>	Human
<b>Source</b>	E.coli
<b>ProteinLength</b>	19-201 aa
<b>Description</b>	LY6G5B belongs to a cluster of leukocyte antigen-6 (LY6) genes located in the major histocompatibility complex (MHC) class III region on chromosome 6. Members of the LY6 superfamily typically contain 70 to 80 amino acids, including 8 to 10 cysteines. Most LY6 proteins are attached to the cell surface by a glycosylphosphatidylinositol (GPI) anchor that is directly involved in signal transduction.
<b>Form</b>	Sterile PBS, pH7.4, 0.1% SKL
<b>Molecular Mass</b>	22 kDa
<b>AASequence</b>	MHHHHHHHHHHKVPVDIRTCHFCLVEDPSVGCISGSEKCTISSSSLCMVITIYYDVK VRFIVRGCGQYISYRCQEKRNTYFAEYWYQAQCCQYDYCNWSWSSPQLQSSLPEPH DRPLALPLSDSQIQWFYQALNLSLPLPNFHAGTEPDGLDPMVTLNLNLGLSFAELRR MYLFLNSSGLLVLPQAGLLTPHPS
<b>Endotoxin</b>	< 1 EU/μg by LAL

 Tel: 1-631-559-9269 1-516-512-3133

 Email: [info@creative-biomart.com](mailto:info@creative-biomart.com)  Fax: 1-631-938-8127

 45-1 Ramsey Road, Shirley, NY 11967, USA

<b>Purity</b>	> 90% by SDS-PAGE
<b>Storage</b>	Store it under sterile conditions at -20 to -80 centigrade. It is recommended that the protein be aliquoted for optimal storage. Avoid repeated freeze-thaw cycles.
<b>Concentration</b>	1 mg/mL by BCA

## GENE INFORMATION

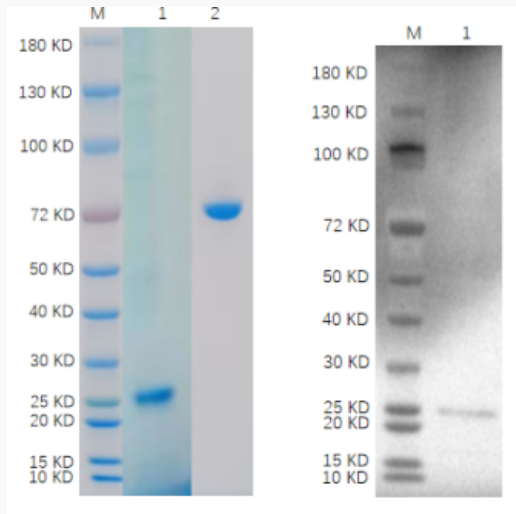
<b>Gene Name</b>	LY6G5B lymphocyte antigen 6 complex, locus G5B [ Homo sapiens (human) ]
<b>Official Symbol</b>	LY6G5B
<b>Synonyms</b>	LY6G5B; lymphocyte antigen 6 complex, locus G5B; C6orf19, chromosome 6 open reading frame 19; lymphocyte antigen 6 complex locus protein G5b; G5b; lymphocyte antigen-6 G5B; C6orf19
<b>Gene ID</b>	58496
<b>mRNA Refseq</b>	NM_021221
<b>Protein Refseq</b>	NP_067044
<b>MIM</b>	610433
<b>UniProt ID</b>	Q8NDX9

 Tel: 1-631-559-9269 1-516-512-3133

 Email: [info@creative-biomart.com](mailto:info@creative-biomart.com)  Fax: 1-631-938-8127

 45-1 Ramsey Road, Shirley, NY 11967, USA

**SDS-PAGE and WB**



Reducing 4%-20% SDS-PAGE (CBB stained) and WB (Anti-His Mouse Monoclonal antibody) analysis profiles of purified LY6G5B. 1. LY6G5B: 1 ug 2. BSA: 1 ug

 Tel: 1-631-559-9269 1-516-512-3133

 Email: [info@creative-biomart.com](mailto:info@creative-biomart.com)  Fax: 1-631-938-8127

 45-1 Ramsey Road, Shirley, NY 11967, USA