

Recombinant Human LY6G5B Protein, GST-tagged

Cat. No. LY6G5B-4569H Lot. No. (See product label)

SPECIFICATION

Product Overview	Human LY6G5B full-length ORF (NP_067044.2, 1 a.a. - 201 a.a.) recombinant protein with GST-tag at N-terminal.
Species	Human
Source	Wheat Germ
Description	LY6G5B belongs to a cluster of leukocyte antigen-6 (LY6) genes located in the major histocompatibility complex (MHC) class III region on chromosome 6. Members of the LY6 superfamily typically contain 70 to 80 amino acids, including 8 to 10 cysteines. Most LY6 proteins are attached to the cell surface by a glycosylphosphatidylinositol (GPI) anchor that is directly involved in signal transduction (Mallya et al., 2002 [PubMed 12079290]).[supplied by OMIM
Molecular Mass	49 kDa
AA Sequence	MKVHMLVGVLMVGFVTVGKVPVPDIRTCHFCLVEDPSVGCISGSEKCTISSSSLCMV ITIYYDVKVRFIVRGCQYISYRCQEKRNTYFAEYWYQAQCCQYDYCNWSWSSPQLQ SSLPEPHDRPLALPLSDSQIQWFYQALNLSLPLPNFHAGTEPDGLDPMVTLNLSLNLGL SFAELRRMYLFLNSSGLLVLPQAGLLTPHPS
Applications	Enzyme-linked Immunoabsorbent Assay Western Blot (Recombinant protein) Antibody Production Protein Array

 Tel: 1-631-559-9269 1-516-512-3133

 Email: info@creative-biomart.com  Fax: 1-631-938-8127

 45-1 Ramsey Road, Shirley, NY 11967, USA

Notes	Best use within three months from the date of receipt of this protein.
Storage	Store at -80 centigrade. Aliquot to avoid repeated freezing and thawing.
Storage Buffer	50 mM Tris-HCl, 10 mM reduced Glutathione, pH=8.0 in the elution buffer.

GENE INFORMATION

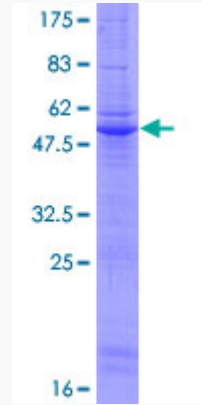
Gene Name	LY6G5B lymphocyte antigen 6 complex, locus G5B [Homo sapiens]
Official Symbol	LY6G5B
Synonyms	LY6G5B; lymphocyte antigen 6 complex, locus G5B; C6orf19, chromosome 6 open reading frame 19; lymphocyte antigen 6 complex locus protein G5b; G5b; lymphocyte antigen-6 G5B; C6orf19;
Gene ID	58496
mRNA Refseq	NM_021221
Protein Refseq	NP_067044
MIM	610433
UniProt ID	Q8NDX9

 Tel: 1-631-559-9269 1-516-512-3133

 Email: info@creative-biomart.com  Fax: 1-631-938-8127

 45-1 Ramsey Road, Shirley, NY 11967, USA

**Quality Control
Testing**



12.5% SDS-PAGE Stained with Coomassie Blue

 Tel: 1-631-559-9269 1-516-512-3133

 Email: info@creative-biomart.com  Fax: 1-631-938-8127

 45-1 Ramsey Road, Shirley, NY 11967, USA