

## Recombinant Human LY6G6D Protein (20-104 aa), His-tagged

Cat. No. LY6G6D-1449H Lot. No. (See product label)

### SPECIFICATION

<b>Product Overview</b>	Recombinant Human LY6G6D Protein (20-104 aa) is produced by Yeast expression system. This protein is fused with a 6xHis tag at the N-terminal. Research Area: Signal Transduction. Protein Description: Full Length of Mature Protein.
<b>Species</b>	Human
<b>Source</b>	Yeast
<b>ProteinLength</b>	20-104 aa
<b>Form</b>	Tris-based buffer,50% glycerol
<b>Molecular Mass</b>	11.1 kDa
<b>AA Sequence</b>	NRMRCYNCGGSPSSSCKEAVTTCGEGRPQPGLEQIKLPGNPPVTLIHQHPACVAAH HCNQVETESVGDVTYPAHRDCYLGDLCNS
<b>Purity</b>	> 90% as determined by SDS-PAGE.
<b>Notes</b>	Repeated freezing and thawing is not recommended. Store working aliquots at 4 centigrade for up to one week.
<b>Storage</b>	The shelf life is related to many factors, storage state, buffer ingredients, storage temperature and the stability of the protein itself. Generally, the shelf life of liquid form is 6 months at -20 centigrade/-80 centigrade. The shelf life of lyophilized form is 12

 Tel: 1-631-559-9269 1-516-512-3133

 Email: [info@creative-biomart.com](mailto:info@creative-biomart.com)  Fax: 1-631-938-8127

 45-1 Ramsey Road, Shirley, NY 11967, USA

months at -20 centigrade/-80 centigrade.

**Concentration**

A hardcopy of COA with reconstitution instruction is sent along with the products.

## GENE INFORMATION

**Gene Name**

LY6G6D lymphocyte antigen 6 family member G6D [ Homo sapiens (human) ]

**Official Symbol**

LY6G6D

**Synonyms**

G6D; NG25; LY6-D; MEGT1; C6orf23;

**Gene ID**

58530

**mRNA Refseq**

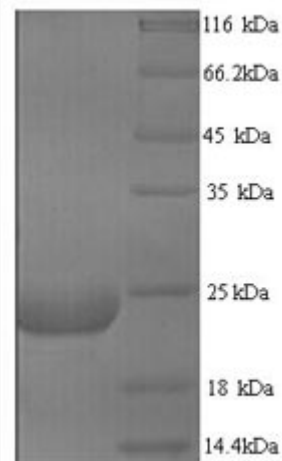
NM\_021246

**Protein Refseq**

NP\_067069

**UniProt ID**

O95868



Tel: 1-631-559-9269 1-516-512-3133

Email: [info@creative-biomart.com](mailto:info@creative-biomart.com) Fax: 1-631-938-8127

45-1 Ramsey Road, Shirley, NY 11967, USA



(Tris-Glycine gel) Discontinuous SDS-PAGE (reduced) with 5% enrichment gel and 15% separation gel.

 Tel: 1-631-559-9269 1-516-512-3133

 Email: [info@creative-biomart.com](mailto:info@creative-biomart.com)  Fax: 1-631-938-8127

 45-1 Ramsey Road, Shirley, NY 11967, USA