

## Active Recombinant Human LY6G6D protein, hFc-tagged

Cat. No. LY6G6D-214H Lot. No. (See product label)

### SPECIFICATION

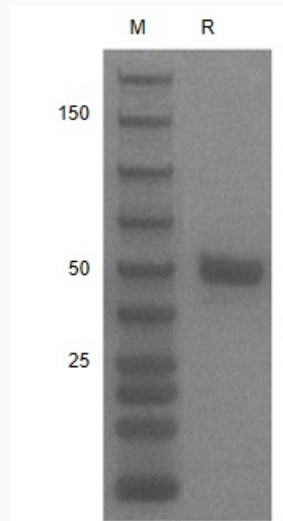
<b>Product Overview</b>	Recombinant Human LY6G6D protein(O95868)(Met1-Ser104), fused with hFc tag, was expressed in HEK293.
<b>Species</b>	Human
<b>Source</b>	HEK293
<b>ProteinLength</b>	Met1-Ser104
<b>Form</b>	Lyophilized from 0.22 µm filtered solution in PBS, pH7.4.
<b>Bio-activity</b>	When Recombinant Human LY6G6D /hFC Protein is immobilized at 2g/mL (100 µ/well), the concentration of Recombinant Anti-Human LY6G6D antibody that produces 50% of the optimal binding response is approximately 100 ng/ml.
<b>Molecular Mass</b>	The protein has a calculated MW of 34kDa.The reducing (R) heterodimer protein migrates as 40-60 kDa due to glycosylation
<b>Endotoxin</b>	<1EU/mg
<b>Purity</b>	SDS-PAGE>95%SEC>90%
<b>Storage</b>	Store at -20°C.
<b>Reconstitution</b>	sterile H28O

 Tel: 1-631-559-9269 1-516-512-3133

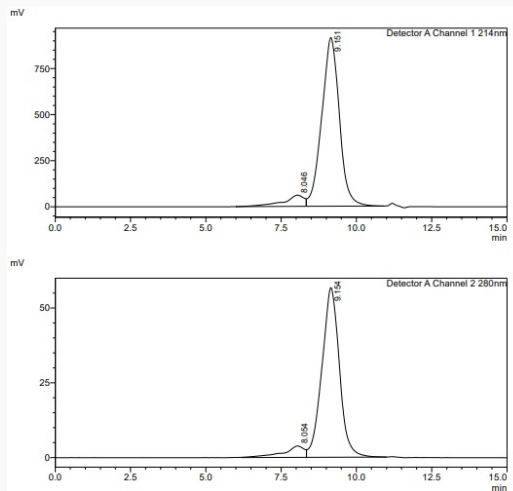
 Email: [info@creative-biomart.com](mailto:info@creative-biomart.com)  Fax: 1-631-938-8127

 45-1 Ramsey Road, Shirley, NY 11967, USA

**SDS-PAGE**



**SDS-HPLC**



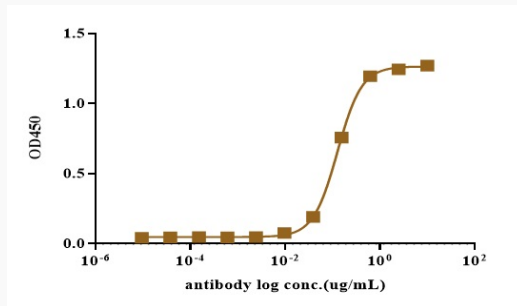
 Tel: 1-631-559-9269 1-516-512-3133

 Email: [info@creative-biomart.com](mailto:info@creative-biomart.com)  Fax: 1-631-938-8127

 45-1 Ramsey Road, Shirley, NY 11967, USA



ELISA



Tel: 1-631-559-9269 1-516-512-3133

Email: [info@creative-biomart.com](mailto:info@creative-biomart.com) Fax: 1-631-938-8127

45-1 Ramsey Road, Shirley, NY 11967, USA