

## Recombinant Human LY6G6D Protein(10-104aa), His-tagged

Cat. No. LY6G6D-9182H Lot. No. (See product label)

### SPECIFICATION

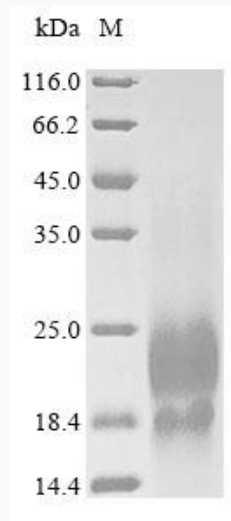
|                         |  |
|-------------------------|--|
| <b>Product Overview</b> | Recombinant Human LY6G6D Protein(10-104aa)(Q14790), fused with N-terminal His tag, was expressed in Yeast.   |
| <b>Species</b>          | Human  |
| <b>Source</b>           | Yeast  |
| <b>ProteinLength</b>    | 10-104aa   |
| <b>Form</b>             | If the delivery form is liquid, the default storage buffer is Tris/PBS-based buffer, 5%-50% glycerol. If the delivery form is lyophilized powder, the buffer before lyophilization is Tris/PBS-based buffer, 6% Trehalose, pH 8.0. |
| <b>Molecular Mass</b>   | 12.0 kDa   |
| <b>AA Sequence</b>      | LSSLLGAALGNRMRCYNCGGSPSSSCKEAVTTCGEGRPQPGLEQIKLPGNPPVTLI<br>HQHPACVAAHHCNQVETESVGDVTYPAHRDCYLGDLNS   |
| <b>Purity</b>           | Greater than 90% as determined by SDS-PAGE.  |
| <b>Storage</b>          | Store at -20°C/-80°C upon receipt, aliquoting is necessary for mutiple use. Avoid repeated freeze-thaw cycles.   |
| <b>Reconstitution</b>   | It is recommended that sterile water be added to the vial to prepare a stock solution of 0.2 ug/ul. Centrifuge the vial at 4°C before opening to recover the entire contents.  |

 Tel: 1-631-559-9269 1-516-512-3133

 Email: [info@creative-biomart.com](mailto:info@creative-biomart.com)  Fax: 1-631-938-8127

 45-1 Ramsey Road, Shirley, NY 11967, USA

**SDS-PAGE**



 Tel: 1-631-559-9269 1-516-512-3133

 Email: [info@creative-biomart.com](mailto:info@creative-biomart.com)  Fax: 1-631-938-8127

 45-1 Ramsey Road, Shirley, NY 11967, USA