

# Recombinant Full Length Human LY6G6F Protein, C-Flag-tagged

**Cat. No.** LY6G6F-1304HFL    **Lot. No.** (See product label)

## SPECIFICATION

<b>Product Overview</b>	Recombinant Full Length Human LY6G6F Protein, fused to Flag-tag at C-terminus, was expressed in Mammalian cells.
<b>Species</b>	Human
<b>Source</b>	Mammalian Cells
<b>Description</b>	The human G6f protein is a type I transmembrane protein belonging to the immunoglobulin (Ig) superfamily, which is comprised of cell-surface proteins involved in the immune system and cellular recognition.
<b>Form</b>	25 mM Tris HCl, pH 7.3, 100 mM glycine, 10% glycerol.
<b>Molecular Mass</b>	30.7 kDa
<b>AA Sequence</b>	<p>MAVLFLLFLFCGTPQAADNMQAIYVALGEAVELPCSPPTLHGDEHLSWFCSPAAG  SFTTLVAQVQVGRP APDPGKPGRESRLRLLGNYSWLEGSKEEDAGRYWCAVLG  QHHNYQNWRVYDVLVLKGSQLSARAADGSP CNVLLCSVVPSRRMDSVTWQEGK  GPVRGRVQSFWGSEAALLLVCPGEGELSEPRSRPRIIRCLMTHNKGV SFSLAASID  ASPALCAPSTGWDMPWILMLLLTMGQGVVILALSIVLWRQRVRGAPGRDASIPQFKP  EIQV  YENIHLARLGPPAHKPRTRTRPLEQKLISEEDLAANDILDYKDDDDKV</p>
<b>Purity</b>	> 80% as determined by SDS-PAGE and Coomassie blue staining.

 Tel: 1-631-559-9269    1-516-512-3133

 Email: [info@creative-biomart.com](mailto:info@creative-biomart.com)     Fax: 1-631-938-8127

 45-1 Ramsey Road, Shirley, NY 11967, USA

<b>Stability</b>	Stable for 12 months from the date of receipt of the product under proper storage and handling conditions. Avoid repeated freeze-thaw cycles.
<b>Storage</b>	Store at -80 centigrade.
<b>Concentration</b>	>50 ug/mL as determined by microplate BCA method.
<b>Preparation</b>	Recombinant protein was captured through anti-DDK affinity column followed by conventional chromatography steps.
<b>Protein Families</b>	Transmembrane
<b>Full Length</b>	Full L.

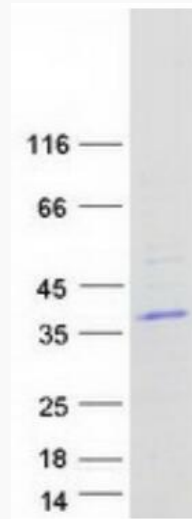
## GENE INFORMATION

<b>Gene Name</b>	LY6G6F lymphocyte antigen 6 family member G6F [ Homo sapiens (human) ]
<b>Official Symbol</b>	LY6G6F
<b>Synonyms</b>	G6f; NG32; LY6G6; LY6G6D; C6orf21
<b>Gene ID</b>	259215
<b>mRNA Refseq</b>	NM_001003693.3
<b>Protein Refseq</b>	NP_001003693.1
<b>MIM</b>	611404
<b>UniProt ID</b>	Q5SQ64

 Tel: 1-631-559-9269 1-516-512-3133

 Email: [info@creative-biomart.com](mailto:info@creative-biomart.com)  Fax: 1-631-938-8127

 45-1 Ramsey Road, Shirley, NY 11967, USA



Coomassie blue staining of purified LY6G6F protein.

Tel: 1-631-559-9269 1-516-512-3133

Email: [info@creative-biomart.com](mailto:info@creative-biomart.com) Fax: 1-631-938-8127

45-1 Ramsey Road, Shirley, NY 11967, USA