

Recombinant Human LY6G6F Protein, Myc/DDK-tagged, C13 and N15-labeled

Cat. No. LY6G6F-3686H **Lot. No.** (See product label)

SPECIFICATION

Product Overview	LY6G6F MS Standard C13 and N15-labeled recombinant protein (NP_001003693) with a C-terminal MYC/DDK tag, was expressed in HEK293 cells.
Species	Human
Source	HEK293
Description	The human G6f protein is a type I transmembrane protein belonging to the immunoglobulin (Ig) superfamily, which is comprised of cell-surface proteins involved in the immune system and cellular recognition.
Molecular Mass	32.46 kDa
AA Sequence	MAVLFLLFLFCGTPQAADNMQAIYVALGEAVELPCPSPPTLHGDEHLSWFCSPAAG SFTTLVAQVQVGRPAPDPGKPGRESRLRLLGNYSWLEGSKEEDAGRYWCAVLGQ HHNYQNWRVYDVLVLKGSQLSARAADGSPCNVLLCSVVPSPRRMDSVTWQEGKGP VRGRVQSFWGSEAALLLVCPGEGLESEPRSRPRIIRCLMTHNKGVSFSLAASIDASP ALCAPSTGWDMPWILMLLLTMGQGVVILALSIVLWRQRVRGAPGRDASIPQFKPEIQ VYENIHLARLGPPAHKPRTRTRPLEQKLISEEDLAANDILDYKDDDDKV
Purity	> 80% as determined by SDS-PAGE and Coomassie blue staining
Stability	Stable for 3 months from receipt of products under proper storage and handling conditions.

 Tel: 1-631-559-9269 1-516-512-3133

 Email: info@creative-biomart.com  Fax: 1-631-938-8127

 45-1 Ramsey Road, Shirley, NY 11967, USA

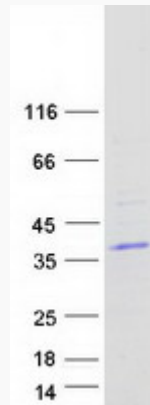
Storage	Store at -80 centigrade. Avoid repeated freeze-thaw cycles.
Concentration	50 µg/mL as determined by BCA
Storage Buffer	100 mM glycine, 25 mM Tris-HCl, pH 7.3.
GENE INFORMATION	
Gene Name	LY6G6F lymphocyte antigen 6 family member G6F [Homo sapiens (human)]
Official Symbol	LY6G6F
Synonyms	LY6G6F; lymphocyte antigen 6 complex, locus G6F; C6orf21, chromosome 6 open reading frame 21, LY6G6D; lymphocyte antigen 6 complex locus protein G6f; G6f; NG32; lymphocyte antigen 6 complex, locus G6D; LY6G6D; C6orf21;
Gene ID	259215
mRNA Refseq	NM_001003693
Protein Refseq	NP_001003693
MIM	611404
UniProt ID	Q5SQ64

 Tel: 1-631-559-9269 1-516-512-3133

 Email: info@creative-biomart.com  Fax: 1-631-938-8127

 45-1 Ramsey Road, Shirley, NY 11967, USA

SDS-PAGE



 Tel: 1-631-559-9269 1-516-512-3133

 Email: info@creative-biomart.com  Fax: 1-631-938-8127

 45-1 Ramsey Road, Shirley, NY 11967, USA