

Recombinant Human LY6H Protein, Myc/DDK-tagged, C13 and N15-labeled

Cat. No. LY6H-1044H **Lot. No.** (See product label)

SPECIFICATION

Product Overview	LY6H MS Standard C13 and N15-labeled recombinant protein (NP_002338) with a C-terminal MYC/DDK tag, was expressed in HEK293 cells.
Species	Human
Source	HEK293
Description	LY6H (Lymphocyte Antigen 6 Family Member H) is a Protein Coding gene. Diseases associated with LY6H include Vertebral Artery Occlusion. Among its related pathways are Metabolism of proteins and Post-translational modification- synthesis of GPI-anchored proteins. An important paralog of this gene is LY6L.
Molecular Mass	14.7 kDa
AA Sequence	MLPAAMKGLGLALLAVLLCSAPAHGLWCQDCTLTTNSSHCTPKQCQPSDTV CASVR ITDPSSSRKDH SVNKMCASSCDFVKRHHFFSDYLMGFINS GILKVDVDCCEKDL CNGA AGAGHSPWALAGGLLLSLGPALLWAGPTRTRPLEQKLISEEDLAANDILDYKDDDDK V
Purity	> 80% as determined by SDS-PAGE and Coomassie blue staining
Stability	Stable for 3 months from receipt of products under proper storage and handling conditions.

 Tel: 1-631-559-9269 1-516-512-3133

 Email: info@creative-biomart.com  Fax: 1-631-938-8127

 45-1 Ramsey Road, Shirley, NY 11967, USA

Storage	Store at -80 centigrade. Avoid repeated freeze-thaw cycles.
Concentration	50 µg/mL as determined by BCA
Storage Buffer	100 mM glycine, 25 mM Tris-HCl, pH 7.3.

GENE INFORMATION

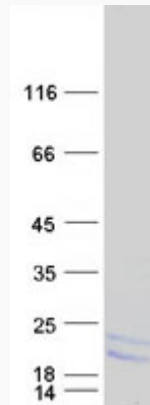
Gene Name	LY6H lymphocyte antigen 6 family member H [Homo sapiens (human)]
Official Symbol	LY6H
Synonyms	LY6H; lymphocyte antigen 6 complex, locus H; lymphocyte antigen 6H; NMLY6; ly-6H;
Gene ID	4062
mRNA Refseq	NM_002347
Protein Refseq	NP_002338
MIM	603625
UniProt ID	O94772

 Tel: 1-631-559-9269 1-516-512-3133

 Email: info@creative-biomart.com  Fax: 1-631-938-8127

 45-1 Ramsey Road, Shirley, NY 11967, USA

SDS-PAGE



 Tel: 1-631-559-9269 1-516-512-3133

 Email: info@creative-biomart.com  Fax: 1-631-938-8127

 45-1 Ramsey Road, Shirley, NY 11967, USA