

Recombinant Human LY6H Protein (Leu26-Gly115), C-His tagged

Cat. No. LY6H-4472H Lot. No. (See product label)

SPECIFICATION

Product Overview	Recombinant human LY6H (Leu26-Gly115) fused with the C-terminal His tag was expressed in Mammalian cells.
Species	Human
Source	Mammalian Cells
ProteinLength	Leu26-Gly115
Form	Lyophilized powder/frozen liquid
Molecular Mass	9.9 kDa
Endotoxin	< 1.0 EU/μg of the protein as determined by the LAL method.
Purity	>90% as determined by SDS-PAGE.
Notes	For research use only.
Storage	Use a manual defrost freezer and avoid repeated freeze thaw cycles. Store at 2 to 8 centigrade for one week. Store at -20 to -80 centigrade for twelve months from the date of receipt.
Storage Buffer	Supplied as solution form in PBS or lyophilized from PBS.

 Tel: 1-631-559-9269 1-516-512-3133

 Email: info@creative-biomart.com  Fax: 1-631-938-8127

 45-1 Ramsey Road, Shirley, NY 11967, USA

Reconstitution Reconstitute in sterile water for a stock solution.

Shipping They are shipped out with dry ice/blue ice unless customers require otherwise.

GENE INFORMATION

Gene Name LY6H lymphocyte antigen 6 complex, locus H [Homo sapiens (human)]

Official Symbol LY6H

Synonyms LY6H; lymphocyte antigen 6 complex, locus H; lymphocyte antigen 6H; NMLY6; ly-6H;

Gene ID 4062

mRNA Refseq NM_001130478

Protein Refseq NP_001123950

MIM 603625

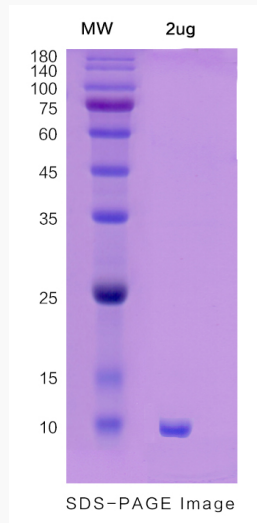
UniProt ID O94772

 Tel: 1-631-559-9269 1-516-512-3133

 Email: info@creative-biomart.com  Fax: 1-631-938-8127

 45-1 Ramsey Road, Shirley, NY 11967, USA

SDS-PAGE



 Tel: 1-631-559-9269 1-516-512-3133

 Email: info@creative-biomart.com  Fax: 1-631-938-8127

 45-1 Ramsey Road, Shirley, NY 11967, USA