

Recombinant Full Length Human LY86 Protein, Flag-tagged

Cat. No. LY86-1213H Lot. No. (See product label)

SPECIFICATION

Product Overview	Recombinant Full Length Human LY86 Protein, Flag-tagged, expressed in HEK293T.
Species	Human
Source	HEK293
Protein Length	1-162 aa
Description	May cooperate with CD180 and TLR4 to mediate the innate immune response to bacterial lipopolysaccharide (LPS) and cytokine production. Important for efficient CD180 cell surface expression (By similarity).
Tag	Flag
Molecular Mass	17.7 kDa
AA Sequence	MKGFTATLFLWTLIFPSCSGGGGGKAWPTHVVCSDSGLEVLYQSCDPLQDFGFSVE KCSKQLKSNINIRF GIILREDIKELFLDLALMSQGSSVLNFSYPICEAALPKFSFCGRRKGEQIYYAGPVNNP EFTIPQGEYQV LLELYTEKRSTVACANATIMCSTRTRPLEQKLISEEDLAANDILDYKDDDDKV
Purity	> 80% as determined by SDS-PAGE and Coomassie blue staining
Notes	For testing in cell culture applications, please filter before use. Note that you may

 Tel: 1-631-559-9269 1-516-512-3133

 Email: info@creative-biomart.com  Fax: 1-631-938-8127

 45-1 Ramsey Road, Shirley, NY 11967, USA

experience some loss of protein during the filtration process.

Stability

Stable for 12 months from the date of receipt of the product under proper storage and handling conditions. Avoid repeated freeze-thaw cycles.

Storage

Store at -80°C.

Concentration

>0.05 µg/µL as determined by microplate BCA method

Storage Buffer

25 mM Tris-HCl, 100 mM glycine, pH 7.3, 10% glycerol

GENE INFORMATION

Gene Name

LY86 lymphocyte antigen 86 [Homo sapiens (human)]

Official Symbol

LY86

Synonyms

dJ80N2.1; MD-1; MD1; MMD-1; LY86

Gene ID

9450

mRNA Refseq

NM_004271

Protein Refseq

NP_004262

MIM

605241

UniProt ID

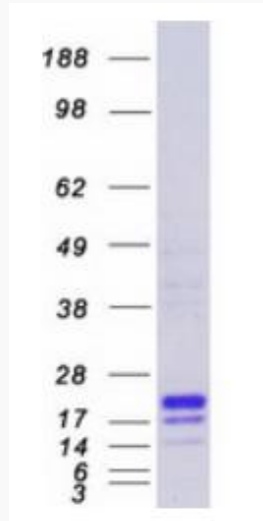
O95711

 Tel: 1-631-559-9269 1-516-512-3133

 Email: info@creative-biomart.com  Fax: 1-631-938-8127

 45-1 Ramsey Road, Shirley, NY 11967, USA

Coomassie blue staining of purified LY86 protein. The protein was produced from HEK293T cells transfected with LY86 cDNA clone using MegaTran 2.0.



SDS-PAGE

 Tel: 1-631-559-9269 1-516-512-3133

 Email: info@creative-biomart.com  Fax: 1-631-938-8127

 45-1 Ramsey Road, Shirley, NY 11967, USA