

Recombinant Human LY86 Protein, GST-tagged

Cat. No. LY86-4567H Lot. No. (See product label)

SPECIFICATION

Product Overview	Human LY86 full-length ORF (NP_004262.1, 1 a.a. - 162 a.a.) recombinant protein with GST-tag at N-terminal.
Species	Human
Source	Wheat Germ
Description	LY86 (Lymphocyte Antigen 86) is a Protein Coding gene. Diseases associated with LY86 include Parametritis and Taylor's Syndrome. Among its related pathways are Innate Immune System and Activated TLR4 signalling.
Molecular Mass	44.3 kDa
AA Sequence	MKGFTATLFLWTLIFPSCSGGGGGKAWPTHVVCSDSGLEVLYQSCDPLQDFGFSVE KCSKQLKSNINIRFGIILREDIKELFLDLALMSQGSSVLNFSYPICEAALPKFSFCGRRK GEQIYYAGPVNNPEFTIPQGEYQVLLLELYTEKRSTVACANATIMCS
Applications	Enzyme-linked Immunoabsorbent Assay Western Blot (Recombinant protein) Antibody Production Protein Array
Notes	Best use within three months from the date of receipt of this protein.
Storage	Store at -80 centigrade. Aliquot to avoid repeated freezing and thawing.

 Tel: 1-631-559-9269 1-516-512-3133

 Email: info@creative-biomart.com  Fax: 1-631-938-8127

 45-1 Ramsey Road, Shirley, NY 11967, USA

Storage Buffer 50 mM Tris-HCl, 10 mM reduced Glutathione, pH=8.0 in the elution buffer.

GENE INFORMATION

Gene Name LY86 lymphocyte antigen 86 [Homo sapiens]

Official Symbol LY86

Synonyms LY86; lymphocyte antigen 86; dJ80N2.1; MD 1; ly-86; protein MD-1; MD-1, RP105-associated; MD-1; MMD-1; RP1-80N2.1;

Gene ID 9450

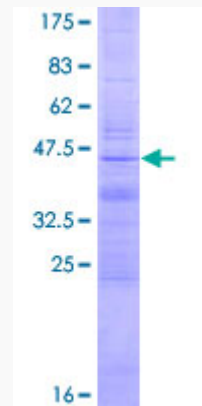
mRNA Refseq NM_004271


Protein Refseq NP_004262

MIM 605241

UniProt ID O95711

Quality Control Testing



 Tel: 1-631-559-9269 1-516-512-3133

 Email: info@creative-biomart.com  Fax: 1-631-938-8127

 45-1 Ramsey Road, Shirley, NY 11967, USA



12.5% SDS-PAGE Stained with Coomassie Blue

 Tel: 1-631-559-9269 1-516-512-3133

 Email: info@creative-biomart.com  Fax: 1-631-938-8127

 45-1 Ramsey Road, Shirley, NY 11967, USA