

Recombinant Human LY86 Protein (Gly21-Ser162), C-Fc tagged

Cat. No. LY86-5343H **Lot. No.** (See product label)

SPECIFICATION

Product Overview	Recombinant human LY86 (Gly21-Ser162) fused with the C-terminal Fc tag was expressed in mammalian cells.
Species	Human
Source	Mammalian Cells
ProteinLength	Gly21-Ser162
Form	Lyophilized powder/frozen liquid
Molecular Mass	40.62 kDa
Endotoxin	< 1.0 EU/μg of the protein as determined by the LAL method.
Purity	>90% as determined by SDS-PAGE.
Notes	For research use only.
Storage	Use a manual defrost freezer and avoid repeated freeze thaw cycles. Store at 2 to 8 centigrade for one week. Store at -20 to -80 centigrade for twelve months from the date of receipt.
Storage Buffer	Supplied as solution form in PBS or lyophilized from PBS.

 Tel: 1-631-559-9269 1-516-512-3133

 Email: info@creative-biomart.com  Fax: 1-631-938-8127

 45-1 Ramsey Road, Shirley, NY 11967, USA

Reconstitution Reconstitute in sterile water for a stock solution.

Shipping They are shipped out with dry ice/blue ice unless customers require otherwise.

GENE INFORMATION

Gene Name LY86 lymphocyte antigen 86 [Homo sapiens (human)]

Official Symbol LY86

Synonyms LY86; lymphocyte antigen 86; dJ80N2.1; MD 1; ly-86; protein MD-1; MD-1, RP105-associated; MD-1; MMD-1; RP1-80N2.1;

Gene ID 9450

mRNA Refseq NM_004271

Protein Refseq NP_004262

MIM 605241

UniProt ID O95711

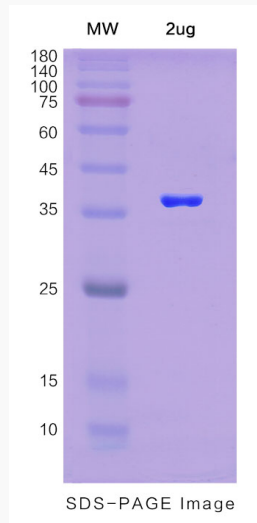
 Tel: 1-631-559-9269 1-516-512-3133

 Email: info@creative-biomart.com  Fax: 1-631-938-8127

 45-1 Ramsey Road, Shirley, NY 11967, USA



SDS-PAGE



Tel: 1-631-559-9269 1-516-512-3133

Email: info@creative-biomart.com Fax: 1-631-938-8127

45-1 Ramsey Road, Shirley, NY 11967, USA