

## Recombinant Human LY86 protein, His-SUMO-tagged

Cat. No. LY86-676H Lot. No. (See product label)

### SPECIFICATION

<b>Product Overview</b>	Recombinant Human LY86 protein(O95711)(21-162aa), fused with N-terminal His and SUMO tag, was expressed in E.coli.
<b>Species</b>	Human
<b>Source</b>	E.coli
<b>ProteinLength</b>	21-162aa
<b>Form</b>	If the delivery form is liquid, the default storage buffer is Tris/PBS-based buffer, 5%-50% glycerol. If the delivery form is lyophilized powder, the buffer before lyophilization is Tris/PBS-based buffer, 6% Trehalose, pH 8.0.
<b>Molecular Mass</b>	28.6 kDa
<b>Purity</b>	Greater than 90% as determined by SDS-PAGE.
<b>Storage</b>	Store at -20°C/-80°C upon receipt, aliquoting is necessary for mutiple use. Avoid repeated freeze-thaw cycles.
<b>Reconstitution</b>	We recommend that this vial be briefly centrifuged prior to opening to bring the contents to the bottom. Please reconstitute protein in deionized sterile water to a concentration of 0.1-1.0 mg/mL. We recommend to add 5-50% of glycerol (final concentration) and aliquot for long-term storage at -20°C/-80°C.

 Tel: 1-631-559-9269 1-516-512-3133

 Email: [info@creative-biomart.com](mailto:info@creative-biomart.com)  Fax: 1-631-938-8127

 45-1 Ramsey Road, Shirley, NY 11967, USA

**AA Sequence** GGGGKAWPTHVVCSDSGLEVLYQSCDPLQDFGFSVEKCSKQLKSNINIRFGIILREDI  
KELFLDLALMSQGSSVLNFSYPICEAALPKFSSFCGRRKGEQIYYAGPVNNPEFTIPQG  
EYQVLLELYTEKRSTVACANATIMCS

## GENE INFORMATION

**Gene Name** LY86 lymphocyte antigen 86 [ Homo sapiens ]

**Official Symbol** LY86

**Synonyms** LY86; lymphocyte antigen 86; dJ80N2.1; MD 1; ly-86; protein MD-1; MD-1, RP105-associated; MD-1; MMD-1; RP1-80N2.1;

**Gene ID** 9450

**mRNA Refseq** NM\_004271

**Protein Refseq** NP\_004262

**MIM** 605241

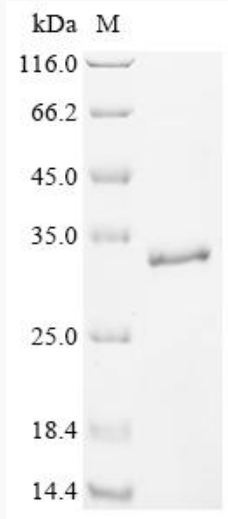
**UniProt ID** O95711

 Tel: 1-631-559-9269 1-516-512-3133

 Email: [info@creative-biomart.com](mailto:info@creative-biomart.com)  Fax: 1-631-938-8127

 45-1 Ramsey Road, Shirley, NY 11967, USA

**SDS-PAGE**



 Tel: 1-631-559-9269 1-516-512-3133

 Email: [info@creative-biomart.com](mailto:info@creative-biomart.com)  Fax: 1-631-938-8127

 45-1 Ramsey Road, Shirley, NY 11967, USA