

Recombinant Human LY9 Protein, GST-tagged

Cat. No. LY9-4565H **Lot. No.** (See product label)

SPECIFICATION

Product Overview	Human LY9 full-length ORF (NP_001028839.1, 1 a.a. - 193 a.a.) recombinant protein with GST-tag at N-terminal.
Species	Human
Source	Wheat Germ
Description	LY9 belongs to the SLAM family of immunomodulatory receptors (see SLAMF1; MIM 603492) and interacts with the adaptor molecule SAP (SH2D1A; MIM 300490) (Graham et al., 2006 [PubMed 16365421]).[supplied by OMIM
Molecular Mass	47.6 kDa
AA Sequence	MVAPKSHDDWAPGPFSSKPQRSQIQIFSSVLQTSLLFLLMGLRASGKDSAPT VVS GILGGSVTLPLNISVDTEIENVIWIGPKNALAFARPKENVTIMVKS YLGRDLITKWSYSL CISNLTLDAGSYKAQINQRNFEVTTEEEFTLFVYAPFIEKLSVHVIEGDHRTLLEGSG LESIISTLAEP RVSVREG
Applications	Enzyme-linked Immunoabsorbent Assay Western Blot (Recombinant protein) Antibody Production Protein Array
Notes	Best use within three months from the date of receipt of this protein.

 Tel: 1-631-559-9269 1-516-512-3133

 Email: info@creative-biomart.com  Fax: 1-631-938-8127

 45-1 Ramsey Road, Shirley, NY 11967, USA

Storage Store at -80 centigrade. Aliquot to avoid repeated freezing and thawing.

Storage Buffer 50 mM Tris-HCl, 10 mM reduced Glutathione, pH=8.0 in the elution buffer.

GENE INFORMATION

Gene Name LY9 lymphocyte antigen 9 [Homo sapiens]

Official Symbol LY9

Synonyms LY9; lymphocyte antigen 9; T-lymphocyte surface antigen Ly-9; CD229; hly9; mLY9; SLAMF3; cell surface molecule Ly-9; cell-surface molecule Ly-9;

Gene ID 4063

mRNA Refseq NM_001033667

Protein Refseq NP_001028839

MIM 600684

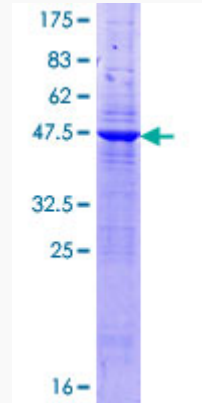
UniProt ID Q9HBG7

 Tel: 1-631-559-9269 1-516-512-3133

 Email: info@creative-biomart.com  Fax: 1-631-938-8127

 45-1 Ramsey Road, Shirley, NY 11967, USA

**Quality Control
Testing**



12.5% SDS-PAGE Stained with Coomassie Blue

 Tel: 1-631-559-9269 1-516-512-3133

 Email: info@creative-biomart.com  Fax: 1-631-938-8127

 45-1 Ramsey Road, Shirley, NY 11967, USA