

# Recombinant Full Length Human LY96 Protein, C-Flag-tagged

Cat. No. LY96-1707HFL Lot. No. (See product label)

## SPECIFICATION

<b>Product Overview</b>	Recombinant Full Length Human LY96 Protein, fused to Flag-tag at C-terminus, was expressed in Mammalian cells.
<b>Species</b>	Human
<b>Source</b>	Mammalian Cells
<b>Description</b>	This gene encodes a protein which associates with toll-like receptor 4 on the cell surface and confers responsiveness to lipopolysaccharide (LPS), thus providing a link between the receptor and LPS signaling. Studies of the mouse ortholog suggest that this gene may be involved in endotoxin neutralization. Alternative splicing results in multiple transcript variants encoding different isoforms.
<b>Form</b>	25 mM Tris HCl, pH 7.3, 100 mM glycine, 10% glycerol.
<b>Molecular Mass</b>	18.4 kDa
<b>AA Sequence</b>	MLPFLFFSTLFFSSIFTEAQKQYWVCNSSDASISYTYCDKMQYPISINVNPCIELKGSK GLLHIFYIPRRD LKQLYFNLYITVNTMNLPKRKEVICRGSDDDYSFCRALKGETVNTTI SFSFKGIKFSKGYKCVVEAISG SPEEMLFCLEFVILHQPNSNTRTRPLEQKLISEEDLAANDILDYKDDDDKV
<b>Purity</b>	> 80% as determined by SDS-PAGE and Coomassie blue staining.
<b>Stability</b>	Stable for 12 months from the date of receipt of the product under proper storage and

 Tel: 1-631-559-9269 1-516-512-3133

 Email: [info@creative-biomart.com](mailto:info@creative-biomart.com)  Fax: 1-631-938-8127

 45-1 Ramsey Road, Shirley, NY 11967, USA



	handling conditions. Avoid repeated freeze-thaw cycles.
<b>Storage</b>	Store at -80 centigrade.
<b>Concentration</b>	>50 ug/mL as determined by microplate BCA method.
<b>Preparation</b>	Recombinant protein was captured through anti-DDK affinity column followed by conventional chromatography steps.
<b>Protein Families</b>	Secreted Protein
<b>Protein Pathways</b>	Pathogenic Escherichia coli infection, Toll-like receptor signaling pathway
<b>Full Length</b>	Full L.

## GENE INFORMATION

<b>Gene Name</b>	LY96 lymphocyte antigen 96 [ Homo sapiens (human) ]
<b>Official Symbol</b>	LY96
<b>Synonyms</b>	MD2; MD-2; ly-96; ESOP-1
<b>Gene ID</b>	23643
<b>mRNA Refseq</b>	NM_015364.5
<b>Protein Refseq</b>	NP_056179.4
<b>MIM</b>	605243

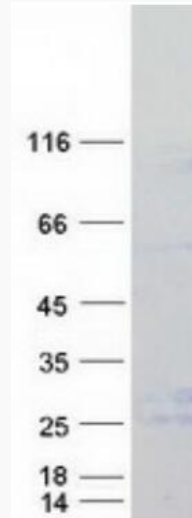
Tel: 1-631-559-9269 1-516-512-3133

Email: [info@creative-biomart.com](mailto:info@creative-biomart.com) Fax: 1-631-938-8127

45-1 Ramsey Road, Shirley, NY 11967, USA

UniProt ID

Q9Y6Y9



Coomassie blue staining of purified LY96 protein.

 Tel: 1-631-559-9269 1-516-512-3133

 Email: [info@creative-biomart.com](mailto:info@creative-biomart.com)  Fax: 1-631-938-8127

 45-1 Ramsey Road, Shirley, NY 11967, USA