

## Recombinant Human LY96 Protein, His-tagged

Cat. No. LY96-4159H Lot. No. (See product label)

### SPECIFICATION

<b>Product Overview</b>	Recombinant Human LY96 protein(Glu17-Asn160), fused with N-terminal His tag, was expressed in E. coli.
<b>Species</b>	Human
<b>Source</b>	E.coli
<b>ProteinLength</b>	Glu17-Asn160
<b>Tag</b>	N-His
<b>Form</b>	Liquid in sterile PBS, pH7.4, 10% Glycerol, 5% Trehalose.
<b>Molecular Mass</b>	The protein has a calculated MW of 19 kDa.
<b>Endotoxin</b>	<1.0EU per 1µg (determined by the LAL method).
<b>Purity</b>	> 90 % as determined by SDS-PAGE.
<b>Storage</b>	Store it under sterile conditions at -20 to -80°C. It is recommended that the protein be aliquoted for optimal storage. Avoid repeated freeze-thaw cycles.
<b>Concentration</b>	0.65 mg/ml. Centrifuge the vial at 4°C before opening to recover the entire contents.
<b>Reconstitution</b>	It is recommended that sterile water be added to the vial to prepare a stock solution of

 Tel: 1-631-559-9269 1-516-512-3133

 Email: [info@creative-biomart.com](mailto:info@creative-biomart.com)  Fax: 1-631-938-8127

 45-1 Ramsey Road, Shirley, NY 11967, USA

0.2 ug/ul. Centrifuge the vial at 4°C before opening to recover the entire contents.

**AA Sequence**

MGSSHHHHHHHSSGLVPRGSEAQKQYWVCNSSDASISYTYCDKMQYPISINVNP  
 CIELKRSKGLLHIFYIPRRDLKQLYFNLYITVNTMNLPKRKEVICRGSDDDYSFCRALK  
 GETVNTTISFSFKGIKFSKGYKCVVEAISGSPEEMLCLEFVILHQPNSN

## GENE INFORMATION

**Gene Name** LY96 lymphocyte antigen 96 [ Homo sapiens ]

**Official Symbol** LY96

**Synonyms** LY96; lymphocyte antigen 96; MD 2; protein MD-2; myeloid differentiation protein-2; MD2; MD-2; ly-96; ESOP-1;

**Gene ID** 23643

**mRNA Refseq** NM\_001195797

**Protein Refseq** NP\_001182726

**MIM** 605243

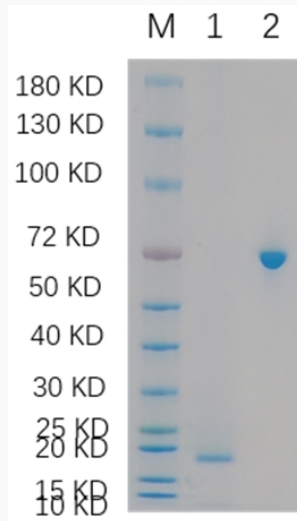
**UniProt ID** Q9Y6Y9

 Tel: 1-631-559-9269 1-516-512-3133

 Email: [info@creative-biomart.com](mailto:info@creative-biomart.com)  Fax: 1-631-938-8127

 45-1 Ramsey Road, Shirley, NY 11967, USA

**SDS-PAGE**



Lane 1: LY96-4159H; Lane 2: BSA

 Tel: 1-631-559-9269 1-516-512-3133

 Email: [info@creative-biomart.com](mailto:info@creative-biomart.com)  Fax: 1-631-938-8127

 45-1 Ramsey Road, Shirley, NY 11967, USA