

Recombinant Human LYAR Protein, GST-tagged

Cat. No. LYAR-4563H **Lot. No.** (See product label)

SPECIFICATION

Product Overview	Human LYAR full-length ORF (NP_060286.1, 1 a.a. - 379 a.a.) recombinant protein with GST-tag at N-terminal.
Species	Human
Source	Wheat Germ
Description	LYAR (Ly1 Antibody Reactive) is a Protein Coding gene. GO annotations related to this gene include poly(A) RNA binding.
Molecular Mass	70 kDa
AA Sequence	MVFFTCNACGESVKKIQVEKHVSVCRNCECLSCIDCGKDFWGDDYKNHVKCISEDQ KYGGKGYEGKTHKGDIIQQAWIQKISELIKRPNVSPKVRELLEQISAFDNVPRKKAKF QNWMKNSLKVHNESILDQVWNIFSEASNSEPVNKEQDQRPLHPVANPHAEISTKVP ASKVKDAVEQQGEVKKNKRERKEERQKKRKREKKELKLENHQENSRNQPKKRRKK GQEADLEAGGEEVPEANGSAGKRSKSKKKQRKDSASEEEARVGAGKRKRHRHSEVE TDSKSKKMKLPEHPEGGEPEDDEAPAKGKFNWKGTIKAILKQAPDNEITIKLRRKKVL AQYYTVTDEHHRSEEELLVIFNKKISKNPTFKLLKDKVKLVK
Applications	Enzyme-linked Immunoabsorbent Assay Western Blot (Recombinant protein) Antibody Production Protein Array

 Tel: 1-631-559-9269 1-516-512-3133

 Email: info@creative-biomart.com  Fax: 1-631-938-8127

 45-1 Ramsey Road, Shirley, NY 11967, USA

Notes	Best use within three months from the date of receipt of this protein.
Storage	Store at -80 centigrade. Aliquot to avoid repeated freezing and thawing.
Storage Buffer	50 mM Tris-HCl, 10 mM reduced Glutathione, pH=8.0 in the elution buffer.

GENE INFORMATION

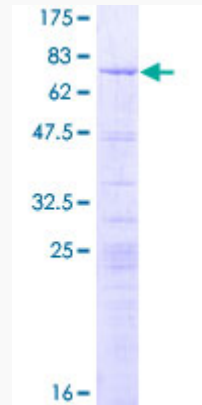
Gene Name	LYAR Ly1 antibody reactive homolog (mouse) [Homo sapiens]
Official Symbol	LYAR
Synonyms	LYAR; Ly1 reactive homolog (mouse); cell growth-regulating nucleolar protein; ZLYAR; FLJ20425;
Gene ID	55646
mRNA Refseq	NM_001145725
Protein Refseq	NP_001139197
UniProt ID	Q9NX58

 Tel: 1-631-559-9269 1-516-512-3133

 Email: info@creative-biomart.com  Fax: 1-631-938-8127

 45-1 Ramsey Road, Shirley, NY 11967, USA

**Quality Control
Testing**



12.5% SDS-PAGE Stained with Coomassie Blue

 Tel: 1-631-559-9269 1-516-512-3133

 Email: info@creative-biomart.com  Fax: 1-631-938-8127

 45-1 Ramsey Road, Shirley, NY 11967, USA