

Recombinant Human LYN Protein (Full Length), N-FLAG tagged

Cat. No. LYN-12H Lot. No. (See product label)

SPECIFICATION

Product Overview	Recombinant Human LYN Protein (Full Length) with N-FLAG tag was expressed in Baculovirus.
Species	Human
Source	Insect Cells
ProteinLength	Full Length
Description	This gene encodes a tyrosine protein kinase, which maybe involved in the regulation of mast cell degranulation, and erythroid differentiation. Alternatively spliced transcript variants encoding different isoforms have been found for this gene.
Molecular Mass	57 kDa
Purity	> 90%
Storage	Recombinant proteins in solution are temperature sensitive and must be stored at -80 centigrade to prevent degradation. Avoid repeated freeze/thaw cycles and keep on ice when not in storage.

GENE INFORMATION

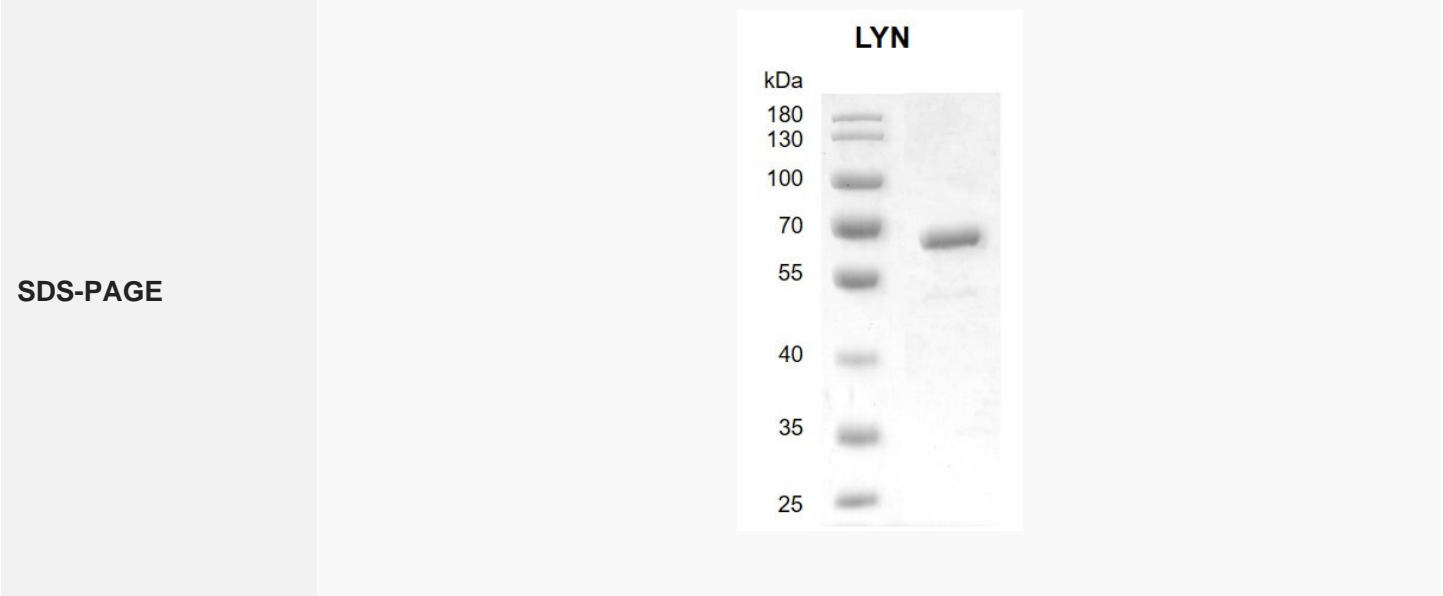
Gene Name LYN LYN proto-oncogene, Src family tyrosine kinase [Homo sapiens (human)]

 Tel: 1-631-559-9269 1-516-512-3133

 Email: info@creative-biomart.com  Fax: 1-631-938-8127

 45-1 Ramsey Road, Shirley, NY 11967, USA

Official Symbol	LYN
Synonyms	LYN; LYN proto-oncogene, Src family tyrosine kinase; JTK8; SAIDV; p53Lyn; p56Lyn; tyrosine-protein kinase Lyn; lck/Yes-related novel protein tyrosine kinase; v-yes-1 Yamaguchi sarcoma viral related oncogene homolog; EC 2.7.10.2
Gene ID	4067
mRNA Refseq	NM_001111097
Protein Refseq	NP_001104567
MIM	165120
UniProt ID	P07948

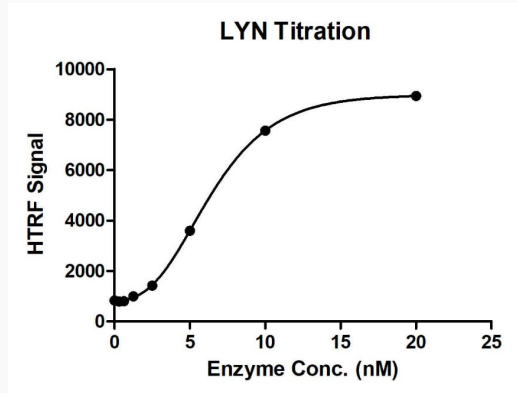


 Tel: 1-631-559-9269 1-516-512-3133

 Email: info@creative-biomart.com  Fax: 1-631-938-8127

 45-1 Ramsey Road, Shirley, NY 11967, USA

Activity



 Tel: 1-631-559-9269 1-516-512-3133

 Email: info@creative-biomart.com  Fax: 1-631-938-8127

 45-1 Ramsey Road, Shirley, NY 11967, USA