

## Active Recombinant Human LYN Protein, GST-tagged

Cat. No. LYN-252H Lot. No. (See product label)

### SPECIFICATION

<b>Product Overview</b>	Active Recombinant Human LYN Protein(NP_002341.1) (Met 1-Pro 512) was expressed in Insect Cells, fused with the GST tag at the N-terminus.
<b>Species</b>	Human
<b>Source</b>	Insect Cells
<b>ProteinLength</b>	1-512 aa
<b>Form</b>	Supplied as sterile 50mM Tris, 100mM NaCl, pH 8.0, 0.5mM Reduced Glutathione, 10% gly, 0.5mM PMSF.
<b>Bio-activity</b>	The specific activity was determined to be 30 nmol/min/mg using Poly(Glu,Tyr) 4:1 as substrate.
<b>Molecular Mass</b>	The recombinant human LYN/GST chimera consists of 736 amino acids and predicts a molecular mass of 84.8 kDa. It migrates as an approximately 75 kDa band in SDS-PAGE under reducing conditions.
<b>Endotoxin</b>	< 1.0 EU per µg of the protein as determined by the LAL method.
<b>Purity</b>	> 94 % as determined by SDS-PAGE
<b>Storage</b>	Store it under sterile conditions at -20°C to -80°C upon receiving. Recommend to aliquot the protein into smaller quantities for optimal storage. Avoid repeated freeze-

 Tel: 1-631-559-9269 1-516-512-3133

 Email: [info@creative-biomart.com](mailto:info@creative-biomart.com)  Fax: 1-631-938-8127

 45-1 Ramsey Road, Shirley, NY 11967, USA

thaw cycles.

**Reconstitution**

It is recommended that sterile water be added to the vial to prepare a stock solution of 0.2 ug/ul. Centrifuge the vial at 4°C before opening to recover the entire contents.

## GENE INFORMATION

**Gene Name** LYN v-yes-1 Yamaguchi sarcoma viral related oncogene homolog [ Homo sapiens ]

**Official Symbol** LYN

**Synonyms** LYN; v-yes-1 Yamaguchi sarcoma viral related oncogene homolog; tyrosine-protein kinase Lyn; JTK8; lck/Yes-related novel protein tyrosine kinase; p53Lyn; p56Lyn; FLJ26625;

**Gene ID** 4067

**mRNA Refseq** NM\_001111097

**Protein Refseq** NP\_001104567

**MIM** 165120

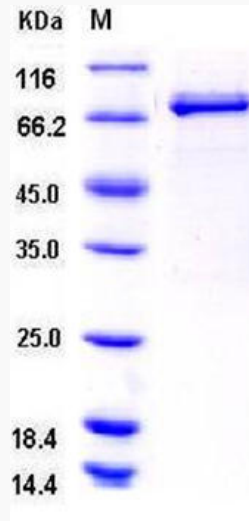
**UniProt ID** P07948

 Tel: 1-631-559-9269 1-516-512-3133

 Email: [info@creative-biomart.com](mailto:info@creative-biomart.com)  Fax: 1-631-938-8127

 45-1 Ramsey Road, Shirley, NY 11967, USA

SDS-PAGE



 Tel: 1-631-559-9269 1-516-512-3133

 Email: [info@creative-biomart.com](mailto:info@creative-biomart.com)  Fax: 1-631-938-8127

 45-1 Ramsey Road, Shirley, NY 11967, USA