

Recombinant Human LYN Protein, GST-tagged

Cat. No. LYN-4556H Lot. No. (See product label)

SPECIFICATION

Product Overview	Human LYN full-length ORF (NP_002341.1, 1 a.a. - 512 a.a.) recombinant protein with GST-tag at N-terminal.
Species	Human
Source	Wheat Germ
Description	This gene encodes a tyrosine protein kinase, which maybe involved in the regulation of mast cell degranulation, and erythroid differentiation. Alternatively spliced transcript variants encoding different isoforms have been found for this gene. [provided by RefSeq, Jul 2011]
Molecular Mass	81.95 kDa
AA Sequence	<p>MGCIKSKGKDSLSDDGVDLKTQPVRNTERTIYVRDPTSNKQQRVPESQLLPGQRF QTKDPEEQGDIVVALYPYDGIHPDDL SFKKGEKMKVLEEHGEWWKAKSLLTKEGFI PSNYVAKLNTLETEEWFFKDITRKAERQLLAPGNSAGAF LIRES ETLKGSFSLSVRD FDPVHGDVIKHYKIRSLDNGGYYISPRITFPCISDMIKHYQKQADGLCRRLEKACISPK PQKPWDKDAWEIPRESIKLVKRLGAGQFGEVWMGYNNSTKVAVKTLKPGTMSVQ AFLEEANLMKTLQHDKLVRLYAVVTREPIYIITEYMAKGSLLDFLKSDEGGKVLLPKL IDFSAQIAEGMAYIERKNYIHRDLRAANVLVSESLMCKIADFGLARVIEDNEYTAREGA KFPIKWTAPEAINFGCFTIKSDVWSFGILLYEIVTYGKIPYPGR TNADVMTALSQGYR MPRVENCPELDYDIMKMCWKEKAEERPTFDY LQSVLDDFYTATEGQYQQQP</p>
Applications	Enzyme-linked Immunoabsorbent Assay

 Tel: 1-631-559-9269 1-516-512-3133

 Email: info@creative-biomart.com  Fax: 1-631-938-8127

 45-1 Ramsey Road, Shirley, NY 11967, USA

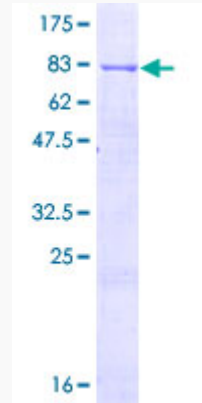
	Western Blot (Recombinant protein) Antibody Production Protein Array
Notes	Best use within three months from the date of receipt of this protein.
Storage	Store at -80 centigrade. Aliquot to avoid repeated freezing and thawing.
Storage Buffer	50 mM Tris-HCl, 10 mM reduced Glutathione, pH=8.0 in the elution buffer.
GENE INFORMATION	
Gene Name	LYN v-yes-1 Yamaguchi sarcoma viral related oncogene homolog [Homo sapiens]
Official Symbol	LYN
Synonyms	LYN; v-yes-1 Yamaguchi sarcoma viral related oncogene homolog; tyrosine-protein kinase Lyn; JTK8; lck/Yes-related novel protein tyrosine kinase; p53Lyn; p56Lyn; FLJ26625;
Gene ID	4067
mRNA Refseq	NM_0011111097
Protein Refseq	NP_001104567
MIM	165120
UniProt ID	P07948

 Tel: 1-631-559-9269 1-516-512-3133

 Email: info@creative-biomart.com  Fax: 1-631-938-8127

 45-1 Ramsey Road, Shirley, NY 11967, USA

**Quality Control
Testing**



12.5% SDS-PAGE Stained with Coomassie Blue

 Tel: 1-631-559-9269 1-516-512-3133

 Email: info@creative-biomart.com  Fax: 1-631-938-8127

 45-1 Ramsey Road, Shirley, NY 11967, USA