

Active Recombinant Human LYN Protein, GST/His-tagged

Cat. No. LYN-4557H **Lot. No.** (See product label)

SPECIFICATION

Product Overview	Human LYN (NM_002350, 1 a.a. - 512 a.a.) full-length recombinant protein with GST-His tag expressed in Sf9 cells.
Species	Human
Source	Insect Cells
Description	This gene encodes a tyrosine protein kinase, which maybe involved in the regulation of mast cell degranulation, and erythroid differentiation. Alternatively spliced transcript variants encoding different isoforms have been found for this gene. [provided by RefSeq, Jul 2011]
Form	Liquid
Bio-activity	94 pmol/μg x min
Molecular Mass	88.470 kDa
Applications	Functional Study SDS-PAGE
Storage	Store at -80 centigrade. Aliquot to avoid repeated freezing and thawing.
Concentration	0.222 μg/μL

 Tel: 1-631-559-9269 1-516-512-3133

 Email: info@creative-biomart.com  Fax: 1-631-938-8127

 45-1 Ramsey Road, Shirley, NY 11967, USA

Storage Buffer In 50 mM Tris-HCl, 100 mM NaCl, pH 8.0. (5 mM DTT, 4 mM reduced glutathione, 20% glycerol)

GENE INFORMATION

Gene Name LYN v-yes-1 Yamaguchi sarcoma viral related oncogene homolog [Homo sapiens]

Official Symbol LYN

Synonyms LYN; v-yes-1 Yamaguchi sarcoma viral related oncogene homolog; tyrosine-protein kinase Lyn; JTK8; lck/Yes-related novel protein tyrosine kinase; p53Lyn; p56Lyn; FLJ26625;

Gene ID 4067

mRNA Refseq NM_0011111097

Protein Refseq NP_001104567

MIM 165120

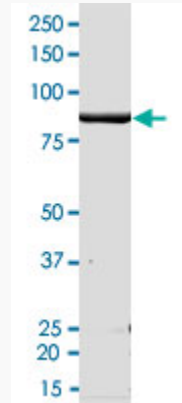
UniProt ID P07948

 Tel: 1-631-559-9269 1-516-512-3133

 Email: info@creative-biomart.com  Fax: 1-631-938-8127

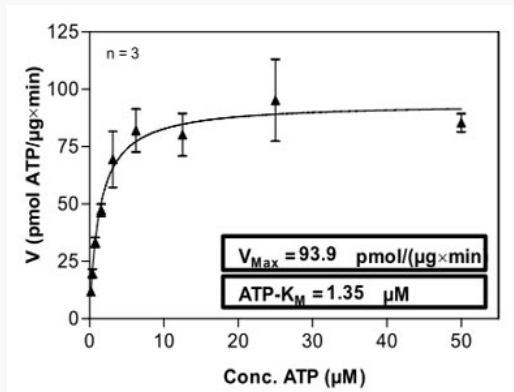
 45-1 Ramsey Road, Shirley, NY 11967, USA

Quality Control
Testing



2 µg/lane SDS-PAGE Stained with Coomassie Blue

Result of activity
analysis



Tel: 1-631-559-9269 1-516-512-3133

Email: info@creative-biomart.com Fax: 1-631-938-8127

45-1 Ramsey Road, Shirley, NY 11967, USA