

Recombinant Human LYN Protein, Myc/DDK-tagged, C13 and N15-labeled

Cat. No. LYN-4990H **Lot. No.** (See product label)

SPECIFICATION

Product Overview

LYN MS Standard C13 and N15-labeled recombinant protein (NP_001104567) with a C-terminal MYC/DDK tag, was expressed in HEK293 cells.

Species

Human

Source

HEK293

Description

This gene encodes a tyrosine protein kinase, which maybe involved in the regulation of mast cell degranulation, and erythroid differentiation. Alternatively spliced transcript variants encoding different isoforms have been found for this gene.

Molecular Mass

55.9 kDa

AA Sequence

MGCIKSKGKDSLSDDGVDLKTQVPESQLLPGQRFQTKDPEEQGDIVVALYPYDGI
 HPDDL SFKKGEKMKVLEEHGEWWKAKSLLTKKEGFIPSNYVAKLNTLETEEWWFFKDI
 TRKDAERQLLAPGNSAGAF LIRES ETLKGSFSLSVRDFDPVHGDVIKHYKIRSLDNG
 GYYISPRITFPCISDMIKHYQKQADGLCRRLEKACISPKPQKPWDKDAWEIPRESIKL
 VKRLGAGQFGEVWMGYNNSTKVAVKTLKPGTMSVQAFLEEANLMKTLQHDKLVR
 LYAVVTREPIYIITEYMAKGSLLDFLKSDEGGKVLLPKLIDFSAQIAEGMAYIERKNYI
 HRDLRAANVLVSESLMCKIADFG LARVIEDNEYTAREGAKFPIKWTAPEAINFGCFTI
 KSDVWSFGILLYEIVTYGKIPYPGR TNADVMTALSQGYRMPRVENC PDELYDIMKMC
 WKEKAEERPTFDYLQSVLDDFYTATEGQYQQQPTRTRPLEQKLISEEDLAANDILDY
 KDDDDKV

 Tel: 1-631-559-9269 1-516-512-3133

 Email: info@creative-biomart.com  Fax: 1-631-938-8127

 45-1 Ramsey Road, Shirley, NY 11967, USA

Purity	> 80% as determined by SDS-PAGE and Coomassie blue staining
Stability	Stable for 3 months from receipt of products under proper storage and handling conditions.
Storage	Store at -80 centigrade. Avoid repeated freeze-thaw cycles.
Concentration	50 µg/mL as determined by BCA
Storage Buffer	100 mM glycine, 25 mM Tris-HCl, pH 7.3.

GENE INFORMATION

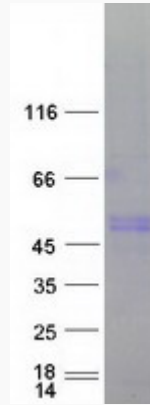
Gene Name	LYN v-yes-1 Yamaguchi sarcoma viral related oncogene homolog [Homo sapiens (human)]
Official Symbol	LYN
Synonyms	LYN; v-yes-1 Yamaguchi sarcoma viral related oncogene homolog; tyrosine-protein kinase Lyn; JTK8; lck/Yes-related novel protein tyrosine kinase; p53Lyn; p56Lyn; FLJ26625;
Gene ID	4067
mRNA Refseq	NM_001111097
Protein Refseq	NP_001104567
MIM	165120
UniProt ID	P07948

 Tel: 1-631-559-9269 1-516-512-3133

 Email: info@creative-biomart.com  Fax: 1-631-938-8127

 45-1 Ramsey Road, Shirley, NY 11967, USA

SDS-PAGE



 Tel: 1-631-559-9269 1-516-512-3133

 Email: info@creative-biomart.com  Fax: 1-631-938-8127

 45-1 Ramsey Road, Shirley, NY 11967, USA