

Recombinant Human LYN Protein, His-tagged

Cat. No. LYN-514H Lot. No. (See product label)

SPECIFICATION

Product Overview	Recombinant Human LYN(Val263~Pro491) fused with His tag at N-terminal was expressed in E. coli.
Species	Human
Source	E.coli
ProteinLength	Val263~Pro491
Description	This gene encodes a tyrosine protein kinase, which maybe involved in the regulation of mast cell degranulation, and erythroid differentiation. Alternatively spliced transcript variants encoding different isoforms have been found for this gene.
Form	PBS, pH7.4, containing 0.01% SKL, 1mM DTT, 5% Trehalose and Proclin300.
Molecular Mass	30.2kDa
Endotoxin	<1.0EU per 1g (determined by the LAL method)
Purity	> 98%
Applications	Positive Control; Immunogen; SDS-PAGE; WB. If bio-activity of the protein is needed, please check active protein.
Stability	The thermal stability is described by the loss rate. The loss rate was determined by

 Tel: 1-631-559-9269 1-516-512-3133

 Email: info@creative-biomart.com  Fax: 1-631-938-8127

 45-1 Ramsey Road, Shirley, NY 11967, USA

accelerated thermal degradation test, that is, incubate the protein at 37 centigrade for 48h, and no obvious degradation and precipitation were observed. The loss rate is less than 5% within the expiration date under appropriate storage condition.

Storage

Avoid repeated freeze/thaw cycles. Store at 2-8 centigrade for one month. Aliquot and store at -80 centigrade for 12 months.

Reconstitution

Reconstitute in PBS or others.

GENE INFORMATION

Gene Name

[LYN v-yes-1 Yamaguchi sarcoma viral related oncogene homolog \[Homo sapiens \]](#)

Official Symbol

[LYN](#)

Synonyms

LYN; v-yes-1 Yamaguchi sarcoma viral related oncogene homolog; tyrosine-protein kinase Lyn; JTK8; lck/Yes-related novel protein tyrosine kinase; p53Lyn; p56Lyn; FLJ26625;

Gene ID

[4067](#)

mRNA Refseq

[NM_001111097](#)

Protein Refseq

[NP_001104567](#)

MIM

[165120](#)

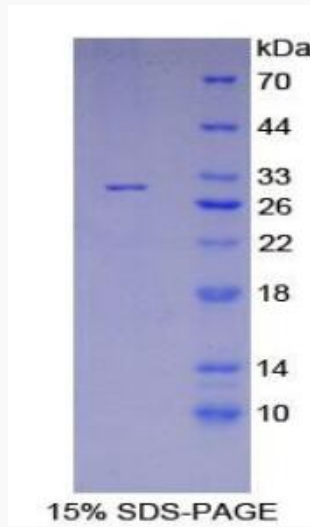
UniProt ID

[P07948](#)

 Tel: 1-631-559-9269 1-516-512-3133

 Email: info@creative-biomart.com  Fax: 1-631-938-8127

 45-1 Ramsey Road, Shirley, NY 11967, USA



Tel: 1-631-559-9269 1-516-512-3133

Email: info@creative-biomart.com Fax: 1-631-938-8127

45-1 Ramsey Road, Shirley, NY 11967, USA