

Recombinant Human LYN protein, His-tagged

Cat. No. LYN-643H Lot. No. (See product label)

SPECIFICATION

Product Overview	Recombinant Human LYN protein(P07948)(2-512aa), fused with N-terminal His tag, was expressed in E.coli.
Species	Human
Source	E.coli
ProteinLength	1-100 a.a.
Form	If the delivery form is liquid, the default storage buffer is Tris/PBS-based buffer, 5%-50% glycerol. If the delivery form is lyophilized powder, the buffer before lyophilization is Tris/PBS-based buffer, 6% Trehalose, pH 8.0.
Molecular Mass	64.4 kDa
Purity	Greater than 90% as determined by SDS-PAGE.
Storage	Store at -20°C/-80°C upon receipt, aliquoting is necessary for mutiple use. Avoid repeated freeze-thaw cycles.
Reconstitution	We recommend that this vial be briefly centrifuged prior to opening to bring the contents to the bottom. Please reconstitute protein in deionized sterile water to a concentration of 0.1-1.0 mg/mL. We recommend to add 5-50% of glycerol (final concentration) and aliquot for long-term storage at -20°C/-80°C.

 Tel: 1-631-559-9269 1-516-512-3133

 Email: info@creative-biomart.com  Fax: 1-631-938-8127

 45-1 Ramsey Road, Shirley, NY 11967, USA

AA Sequence

GCIKSKGKDSLSDDGVDLKTQPVRNTERTIYVRDPTSNKQQRVPESQLLPGQRFQ
 TKDPEEQGDIVVALYPYDGIHPDDL SFKKGEKMKVLEEHGEWWKAKSLLTKKEGFIP
 SNYVAKLNTLETEEWFFKDITRKDAERQLLAPGNSAGAFIRESETLKGSFSLSVRDF
 DPVHGDVIKHYKIRSLDNGGGYYISPRITFPCISDMIKHYQKQADGLCRRLEKACISPKP
 QKPWDKDAWEIPRESIKLVKRLGAGQFGEVWMGYNNSTKVAVKTLKPGTMSVQA
 FLEEANLMKTLQHDKLVRLYAVVTREEPIYIITEYMAKGSLLDFLKSDEGGKVLLPKLI
 DFSAQIAEGMAYIERKNYIHRDLRAANVLVSESLMCKIADFGLARVIEDNEYTAREGA
 KFPIKWTAPEAINFGCFTIKSDVWSFGILLYEIVTYGKIPYPGRTNADVMTALSQGYR
 MPRVENCPDELYDIMKMCWKEKAEERPTFDYLSVLDDFYTATEGQYQQQP

GENE INFORMATION

Gene Name [LYN v-yes-1 Yamaguchi sarcoma viral related oncogene homolog \[Homo sapiens \]](#)

Official Symbol [LYN](#)

Synonyms LYN; v-yes-1 Yamaguchi sarcoma viral related oncogene homolog; tyrosine-protein kinase Lyn; JTK8; lck/Yes-related novel protein tyrosine kinase; p53Lyn; p56Lyn; FLJ26625;

Gene ID [4067](#)

mRNA Refseq [NM_001111097](#)

Protein Refseq [NP_001104567](#)

MIM [165120](#)

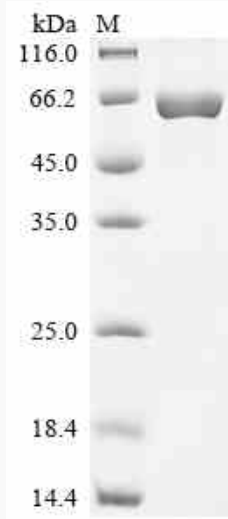
UniProt ID [P07948](#)

 Tel: 1-631-559-9269 1-516-512-3133

 Email: info@creative-biomart.com  Fax: 1-631-938-8127

 45-1 Ramsey Road, Shirley, NY 11967, USA

SDS-PAGE



 Tel: 1-631-559-9269 1-516-512-3133

 Email: info@creative-biomart.com  Fax: 1-631-938-8127

 45-1 Ramsey Road, Shirley, NY 11967, USA