

Recombinant Human LYNA, GST-tagged, Active

Cat. No. LYNA-344H Lot. No. (See product label)

SPECIFICATION

Product Overview	Recombinant full-length human LYN A was expressed by baculovirus in <i>Sf9 insect cell</i> using an N-terminal GST tag. MW=81 kDa.
Species	Human
Source	Sf9 Cells
Description	<p>LYN A is a member of the Src-family of protein kinases that participate in signaling pathways of a variety of cell surface receptors and are localized to the cytoplasmic side of the plasma membrane. LYN A is biosynthetically transported to the plasma membrane via the Golgi pool of caveolin along the secretory pathway. The trafficking of LYN A from the Golgi apparatus to the plasma membrane is inhibited by deletion of the kinase domain but not by kinase inactivation. The kinase domain of LYN A plays a role in LYN A trafficking besides catalysis of substrate phosphorylation. cDNA microarray analysis revealed that LYN A may be involved in the changes that are related to tumor pathogenesis.</p>
Sequence	Full-length.
Applications	Kinase Assay, Western Blot.
Storage And Stability	Store product at -70°C . For optimal storage, aliquot target into smaller quantities after centrifugation and store at recommended temperature. For most favorable performance, avoid repeated handling and multiple freeze/thaw cycles.

 Tel: 1-631-559-9269 1-516-512-3133

 Email: info@creative-biomart.com  Fax: 1-631-938-8127

 45-1 Ramsey Road, Shirley, NY 11967, USA

GENE INFORMATION

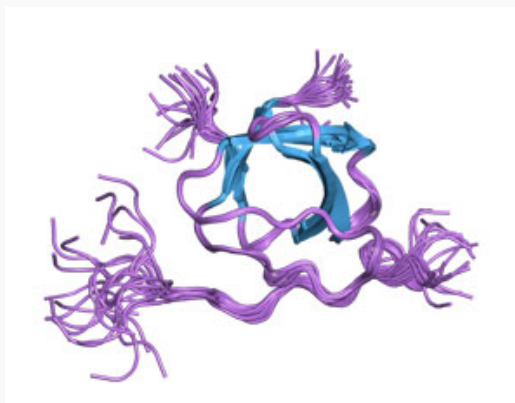
Gene Name	LYN v-yes-1 Yamaguchi sarcoma viral related oncogene homolog [Homo sapiens]
Synonyms	LYN; v-yes-1 Yamaguchi sarcoma viral related oncogene homolog; JTK8; FLJ26625; Yamaguchi sarcoma viral (v-yes-1) related oncogene homolog; EC 2.7.10.2
Gene ID	4067
mRNA Refseq	NM_001111097
Protein Refseq	NP_001104567
MIM	165120
UniProt ID	P07948
Chromosome Location	8q13
Pathway	B cell receptor signaling pathway; Chemokine signaling pathway; Epithelial cell signaling in Helicobacter pylori infection; Fc epsilon RI signaling pathway; Fc gamma R-mediated phagocytosis; Hemostasis; Signaling in Immune system; Fc epsilon RI signaling pathway
Function	ATP binding; glycosphingolipid binding; integrin binding; non-membrane spanning protein tyrosine kinase activity; phosphoprotein binding; platelet-derived growth factor receptor binding; receptor signaling protein tyrosine kinase activity; transferase activity; ubiquitin protein ligase binding

 Tel: 1-631-559-9269 1-516-512-3133

 Email: info@creative-biomart.com  Fax: 1-631-938-8127

 45-1 Ramsey Road, Shirley, NY 11967, USA

PDB rendering based
on 1wa7.



 Tel: 1-631-559-9269 1-516-512-3133

 Email: info@creative-biomart.com  Fax: 1-631-938-8127

 45-1 Ramsey Road, Shirley, NY 11967, USA