

Recombinant Human LYPD1 protein, GST/His-tagged

Cat. No. LYPD1-07H Lot. No. (See product label)

SPECIFICATION

Product Overview	Recombinant Human LYPD1 protein, fused to GST/His-tag, was expressed in E. coli. Protein Families: Druggable Genome, Transmembrane.
Species	Human
Source	E.coli
Description	Predicted to enable acetylcholine receptor binding activity and acetylcholine receptor inhibitor activity. Predicted to be involved in acetylcholine receptor signaling pathway. Predicted to act upstream of or within several processes, including behavioral fear response; cholinergic synaptic transmission; and negative regulation of protein localization to plasma membrane. Predicted to be located in membrane.
Form	25mM Tris, pH8.0, 150mM NaCl, 10% glycerol, 1% Sarkosyl.
Molecular Mass	37.2 kDa
Purity	> 80%
Stability	Stable for 12 months from the date of receipt of the product under proper storage and handling conditions. Avoid repeated freeze-thaw cycles.
Storage	Store at -80 centigrade.
Concentration	>50 ug/mL

 Tel: 1-631-559-9269 1-516-512-3133

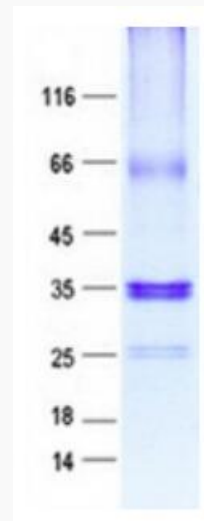
 Email: info@creative-biomart.com  Fax: 1-631-938-8127

 45-1 Ramsey Road, Shirley, NY 11967, USA

GENE INFORMATION

Gene Name	LYPD1 LY6/PLAUR domain containing 1 [Homo sapiens (human)]
Official Symbol	LYPD1
Synonyms	LYPDC1; PHTS
Gene ID	116372
mRNA Refseq	NM_001077427
Protein Refseq	NP_001070895
MIM	610450
UniProt ID	Q8N2G4

SDS-PAGE



 Tel: 1-631-559-9269 1-516-512-3133

 Email: info@creative-biomart.com  Fax: 1-631-938-8127

 45-1 Ramsey Road, Shirley, NY 11967, USA