

Active Recombinant Human LYPD1 protein, hFc-tagged

Cat. No. LYPD1-248H Lot. No. (See product label)

SPECIFICATION

| | |
|-------------------------|---|
| Product Overview | Recombinant Human LYPD1 protein(Q8N2G4)(Leu21-Ser117), fused with hFc tag, was expressed in HEK293. |
| Species | Human |
| Source | HEK293 |
| ProteinLength | Leu21-Ser117 |
| Form | Lyophilized from 0.22 µm filtered solution in PBS, pH7.4. |
| Bio-activity | When Recombinant Human LYPD1 /hFC Protein is immobilized at 5g/mL (100 µ/well), the concentration of Anti-LYPD1 antibody that produces 50% of the optimal binding response is approximately 0.18 ug/ml. |
| Molecular Mass | The protein has a calculated MW of 64kDa.The reducing (R) heterodimer protein migrates as 60-80 kDa due to glycosylation |
| Endotoxin | <1EU/mg |
| Purity | SDS-PAGE>90%SEC>95% |
| Storage | Store at -20°C. |
| Reconstitution | sterile H52O |

 Tel: 1-631-559-9269 1-516-512-3133

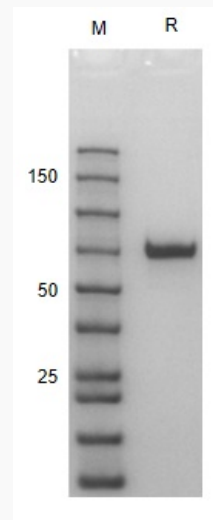
 Email: info@creative-biomart.com  Fax: 1-631-938-8127

 45-1 Ramsey Road, Shirley, NY 11967, USA

GENE INFORMATION

| | |
|------------------------|--|
| Gene Name | LYPD1 LY6/PLAUR domain containing 1 [Homo sapiens] |
| Official Symbol | LYPD1 |
| Synonyms | LYPD1; LY6/PLAUR domain containing 1; LYPDC1; ly6/PLAUR domain-containing protein 1; MGC29643; putative HeLa tumor suppressor; PHTS; FLJ41033; |
| Gene ID | 116372 |
| mRNA Refseq | NM_001077427 |
| Protein Refseq | NP_001070895 |
| MIM | 610450 |
| UniProt ID | Q8N2G4 |

SDS-PAGE

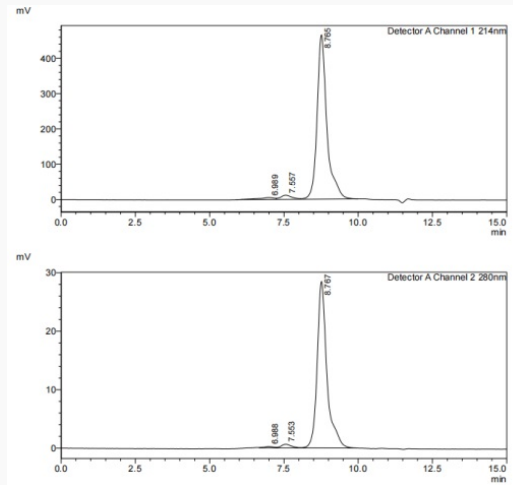


 Tel: 1-631-559-9269 1-516-512-3133

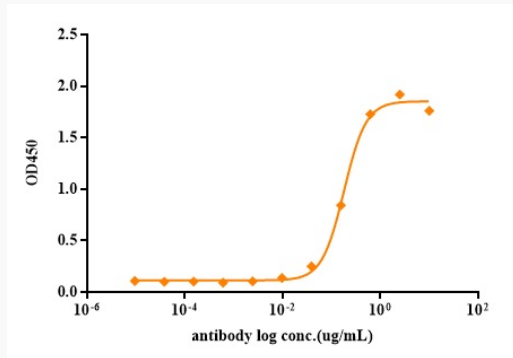
 Email: info@creative-biomart.com  Fax: 1-631-938-8127

 45-1 Ramsey Road, Shirley, NY 11967, USA

SDS-HPLC



ELISA



Tel: 1-631-559-9269 1-516-512-3133

Email: info@creative-biomart.com Fax: 1-631-938-8127

45-1 Ramsey Road, Shirley, NY 11967, USA