

Active Recombinant Human LYPD1 protein, His-tagged

Cat. No. LYPD1-9237H Lot. No. (See product label)

SPECIFICATION

Product Overview	Recombinant Human LYPD1 protein(Q8N2G4)(Leu21-Ser117), fused with His tag, was expressed in HEK293.
Species	Human
Source	HEK293
ProteinLength	Leu21-Ser117
Form	Lyophilized from 0.22 µm filtered solution in PBS, pH7.4.
Bio-activity	When Recombinant Human LYPD1 /sumo His Protein is immobilized at 5g/mL (100 µ/well), the concentration of Anti LYPD1 antibody that produces 50% of the optimal binding response is approximately 0.13ug/ml.
Molecular Mass	The protein has a calculated MW of 24 kDa.The reducing (R) heterodimer protein migrates as 25-35 kDa due to glycosylation
Endotoxin	<1EU/mg
Purity	SDS-PAGE>90%
Storage	Store at -20°C.
Reconstitution	sterile H65O

 Tel: 1-631-559-9269 1-516-512-3133

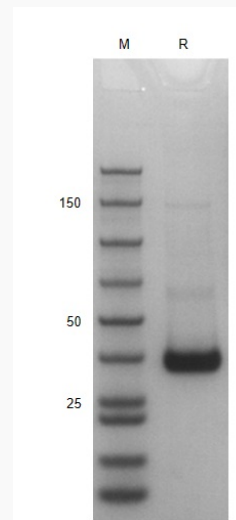
 Email: info@creative-biomart.com  Fax: 1-631-938-8127

 45-1 Ramsey Road, Shirley, NY 11967, USA

GENE INFORMATION

Gene Name	LYPD1 LY6/PLAUR domain containing 1 [Homo sapiens]
Official Symbol	LYPD1
Synonyms	LYPD1; LY6/PLAUR domain containing 1; LYPDC1; ly6/PLAUR domain-containing protein 1; MGC29643; putative HeLa tumor suppressor; PHTS; FLJ41033;
Gene ID	116372
mRNA Refseq	NM_001077427
Protein Refseq	NP_001070895
MIM	610450
UniProt ID	Q8N2G4

SDS-PAGE

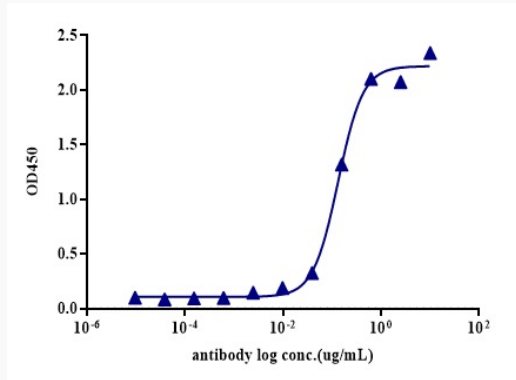


 Tel: 1-631-559-9269 1-516-512-3133

 Email: info@creative-biomart.com  Fax: 1-631-938-8127

 45-1 Ramsey Road, Shirley, NY 11967, USA

ELISA



 Tel: 1-631-559-9269 1-516-512-3133

 Email: info@creative-biomart.com  Fax: 1-631-938-8127

 45-1 Ramsey Road, Shirley, NY 11967, USA