

Recombinant Human LYPD3 protein, His-tagged

Cat. No. LYPD3-3789H Lot. No. (See product label)

SPECIFICATION

Product Overview	Recombinant Human LYPD3 protein(O95274)(Leu31-His286), fused with C-terminal His tag, was expressed in HEK293.
Species	Human
Source	HEK293
ProteinLength	Leu31-His286
Tag	C-His
Form	Supplied as 0.22µm filtered solution in PBS (pH 7.4).
Bio-activity	Immobilized Human LYPD3, His Tag at 1ug/ml (100ul/Well) on the plate. Dose response curve for Anti-LYPD3 Ab., hFc Tag with the EC50 of 2.3ng/ml determined by ELISA (QC Test).
Molecular Mass	The protein has a predicted MW of 27.8 kDa. Due to glycosylation, the protein migrates to 60-70 kDa based on Tris-Bis PAGE result.
Endotoxin	Less than 1EU per µg by the LAL method.
Purity	> 95% as determined by Tris-Bis PAGE;> 95% as determined by HPLC
Storage	Valid for 12 months from date of receipt when stored at -80°C. Recommend to aliquot

 Tel: 1-631-559-9269 1-516-512-3133

 Email: info@creative-biomart.com  Fax: 1-631-938-8127

 45-1 Ramsey Road, Shirley, NY 11967, USA

the protein into smaller quantities for optimal storage. Please do not repeated freeze-thaw cycles.

Reconstitution

It is recommended that sterile water be added to the vial to prepare a stock solution of 0.2 ug/ul. Centrifuge the vial at 4°C before opening to recover the entire contents.

GENE INFORMATION

Gene Name [LYPD3 LY6/PLAUR domain containing 3 \[Homo sapiens \]](#)

Official Symbol [LYPD3](#)

Synonyms

LYPD3; LY6/PLAUR domain containing 3; ly6/PLAUR domain-containing protein 3; C4.4A; MIG-C4; 2310061G07Rik; matrigel-induced gene C4 protein; GPI-anchored metastasis-associated protein homolog; GPI-anchored metastasis-associated protein C4.4A homolog;

Gene ID [27076](#)

mRNA Refseq [NM_014400](#)

Protein Refseq [NP_055215](#)

MIM [609484](#)

UniProt ID [O95274](#)

 Tel: 1-631-559-9269 1-516-512-3133

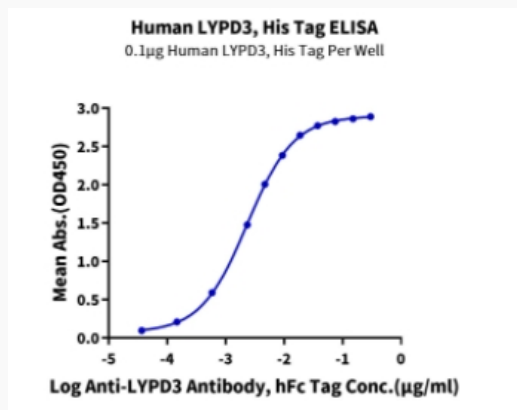
 Email: info@creative-biomart.com  Fax: 1-631-938-8127

 45-1 Ramsey Road, Shirley, NY 11967, USA

Tris-Bis PAGE



ELISA Data



 Tel: 1-631-559-9269 1-516-512-3133

 Email: info@creative-biomart.com  Fax: 1-631-938-8127

 45-1 Ramsey Road, Shirley, NY 11967, USA