

## Recombinant Human LYPD3 Protein (Leu31-His286), C-His tagged

Cat. No. LYPD3-4194H Lot. No. (See product label)

### SPECIFICATION

|                         |   |
|-------------------------|---|
| <b>Product Overview</b> | Recombinant human LYPD3 (Leu31-His286) fused with the C-terminal His tag was expressed in Mammalian cells.  |
| <b>Species</b>          | Human   |
| <b>Source</b>           | Mammalian Cells   |
| <b>ProteinLength</b>    | Leu31-His286  |
| <b>Form</b>             | Lyophilized powder/frozen liquid  |
| <b>Molecular Mass</b>   | 28.16 kDa   |
| <b>Endotoxin</b>        | < 1.0 EU/μg of the protein as determined by the LAL method.   |
| <b>Purity</b>           | >90% as determined by SDS-PAGE.   |
| <b>Notes</b>            | For research use only.  |
| <b>Storage</b>          | Use a manual defrost freezer and avoid repeated freeze thaw cycles. Store at 2 to 8 centigrade for one week. Store at -20 to -80 centigrade for twelve months from the date of receipt. |
| <b>Storage Buffer</b>   | Supplied as solution form in PBS or lyophilized from PBS.   |

 Tel: 1-631-559-9269 1-516-512-3133

 Email: [info@creative-biomart.com](mailto:info@creative-biomart.com)  Fax: 1-631-938-8127

 45-1 Ramsey Road, Shirley, NY 11967, USA

**Reconstitution** Reconstitute in sterile water for a stock solution.

**Shipping** They are shipped out with dry ice/blue ice unless customers require otherwise.

## GENE INFORMATION

**Gene Name** [LYPD3 LY6/PLAUR domain containing 3 \[ Homo sapiens \(human\) \]](#)

**Official Symbol** [LYPD3](#)

**Synonyms** LYPD3; LY6/PLAUR domain containing 3; ly6/PLAUR domain-containing protein 3; C4.4A; MIG-C4; 2310061G07Rik; matrigel-induced gene C4 protein; GPI-anchored metastasis-associated protein homolog; GPI-anchored metastasis-associated protein C4.4A homolog;

**Gene ID** [27076](#)

**mRNA Refseq** [NM\\_014400](#)

**Protein Refseq** [NP\\_055215](#)

**MIM** [609484](#)

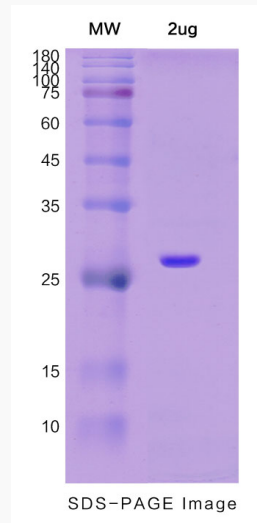
**UniProt ID** [O95274](#)

 Tel: 1-631-559-9269 1-516-512-3133

 Email: [info@creative-biomart.com](mailto:info@creative-biomart.com)  Fax: 1-631-938-8127

 45-1 Ramsey Road, Shirley, NY 11967, USA

**SDS-PAGE**



 Tel: 1-631-559-9269 1-516-512-3133

 Email: [info@creative-biomart.com](mailto:info@creative-biomart.com)  Fax: 1-631-938-8127

 45-1 Ramsey Road, Shirley, NY 11967, USA