

Recombinant Human LYPD3 Protein, GST-tagged

Cat. No. LYPD3-4554H Lot. No. (See product label)

SPECIFICATION

Product Overview	Human LYPD3 full-length ORF (NP_055215.2, 1 a.a. - 346 a.a.) recombinant protein with GST-tag at N-terminal.
Species	Human
Source	Wheat Germ
Description	LYPD3 (LY6/PLAUR Domain Containing 3) is a Protein Coding gene. Among its related pathways are Post-translational modification- synthesis of GPI-anchored proteins and Metabolism of proteins. GO annotations related to this gene include laminin binding. An important paralog of this gene is LYPD5.
Molecular Mass	62.4 kDa
AA Sequence	MDPARKAGAQAAMIWTAGWLLLLLLLRGGAQALECYSCVQKADDGCSPNKMKTVKCA PGVDVCTEAVGAVETIHGQFSLAVRGCGSGLPGKNDRGLDLHGLLAFIQLQQAQD RCNAKLNLTSRALDPAGNESAYPPNGVECYSCVGLSREACQGTSPVVCYNASD HVYKGCDFGNVTLTAAANVTVSLPVRGCVQDEFCTRDGVTGPGFTLSGSCCQGSRC NSDLRNKTYFSPRIPLVRLPPPEPTTVASTTSVTTSTSTAPVRPTSTTKPMPAPTSQT PRQGV EHEASRDEEPRLTGG AAGHQDRS NSGQYPAKGGPQQPHNKGCVAPTAGL AALLLAVAAGVLL
Applications	Enzyme-linked Immunoabsorbent Assay Western Blot (Recombinant protein) Antibody Production

 Tel: 1-631-559-9269 1-516-512-3133

 Email: info@creative-biomart.com  Fax: 1-631-938-8127

 45-1 Ramsey Road, Shirley, NY 11967, USA

Protein Array

Notes	Best use within three months from the date of receipt of this protein.
Storage	Store at -80 centigrade. Aliquot to avoid repeated freezing and thawing.
Storage Buffer	50 mM Tris-HCl, 10 mM reduced Glutathione, pH=8.0 in the elution buffer.

GENE INFORMATION

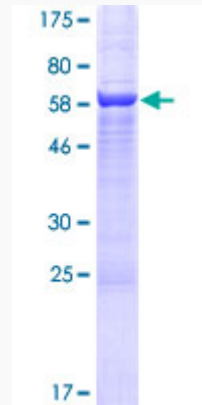
Gene Name	LYPD3 LY6/PLAUR domain containing 3 [Homo sapiens]
Official Symbol	LYPD3
Synonyms	LYPD3; LY6/PLAUR domain containing 3; ly6/PLAUR domain-containing protein 3; C4.4A; MIG-C4; 2310061G07Rik; matrigel-induced gene C4 protein; GPI-anchored metastasis-associated protein homolog; GPI-anchored metastasis-associated protein C4.4A homolog;
Gene ID	27076
mRNA Refseq	NM_014400
Protein Refseq	NP_055215
MIM	609484
UniProt ID	O95274

 Tel: 1-631-559-9269 1-516-512-3133

 Email: info@creative-biomart.com  Fax: 1-631-938-8127

 45-1 Ramsey Road, Shirley, NY 11967, USA

**Quality Control
Testing**



12.5% SDS-PAGE Stained with Coomassie Blue

 Tel: 1-631-559-9269 1-516-512-3133

 Email: info@creative-biomart.com  Fax: 1-631-938-8127

 45-1 Ramsey Road, Shirley, NY 11967, USA