

Recombinant Human LYPLA1 Protein (Met1-Asp230), N-His-tagged

Cat. No. LYPLA1-0171H Lot. No. (See product label)

SPECIFICATION

Product Overview	Recombinant human LYPLA1 (Met1-Asp230) was fused with the N-terminal His tag and was expressed in E. coli.
Species	Human
Source	E.coli
ProteinLength	Met1-Asp230
Form	Lyophilized powder/frozen liquid
Molecular Mass	25.3 kDa
Purity	>90% as determined by SDS-PAGE
Notes	For research use only.
Storage	Use a manual defrost freezer and avoid repeated freeze thaw cycles. Store at 2 to 8 centigrade for one week. Store at -20 to -80 centigrade for twelve months from the date of receipt.
Storage Buffer	Supplied as solution form in PBS or lyophilized from PBS.
Reconstitution	Reconstitute in sterile water for a stock solution.

 Tel: 1-631-559-9269 1-516-512-3133

 Email: info@creative-biomart.com  Fax: 1-631-938-8127

 45-1 Ramsey Road, Shirley, NY 11967, USA

Shipping They are shipped out with dry ice/blue ice unless customers require otherwise.

GENE INFORMATION

Gene Name LYPLA1 lysophospholipase I [Homo sapiens (human)]

Official Symbol LYPLA1

Synonyms LYPLA1; lysophospholipase I; acyl-protein thioesterase 1; LPL1; LPL-I; lysoPLA I; lysophospholipase 1; acyl-protein thioesterase-1; lysophospholipid-specific lysophospholipase; APT-1; hAPT1; LYSOPLA;

Gene ID 10434

mRNA Refseq NM_006330

Protein Refseq NP_006321

MIM 605599

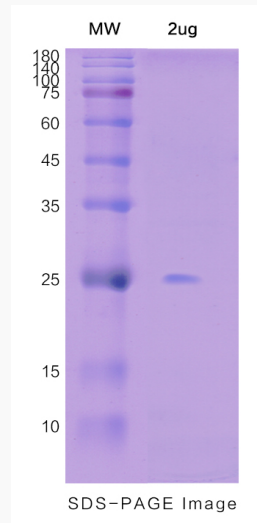
UniProt ID O75608

 Tel: 1-631-559-9269 1-516-512-3133

 Email: info@creative-biomart.com  Fax: 1-631-938-8127

 45-1 Ramsey Road, Shirley, NY 11967, USA

SDS-PAGE



 Tel: 1-631-559-9269 1-516-512-3133

 Email: info@creative-biomart.com  Fax: 1-631-938-8127

 45-1 Ramsey Road, Shirley, NY 11967, USA