

Recombinant Human LYPLA2 Protein (Met1-Val231), C-His tagged

Cat. No. LYPLA2-3976H Lot. No. (See product label)

SPECIFICATION

Product Overview	Recombinant human LYPLA2 (Met1-Val231) fused with the C-terminal His tag was expressed in E. coli.
Species	Human
Source	E.coli
ProteinLength	Met1-Val231
Form	Lyophilized powder/frozen liquid
Molecular Mass	25.41 kDa
Purity	>90% as determined by SDS-PAGE.
Notes	For research use only.
Storage	Use a manual defrost freezer and avoid repeated freeze thaw cycles. Store at 2 to 8 centigrade for one week. Store at -20 to -80 centigrade for twelve months from the date of receipt.
Storage Buffer	Supplied as solution form in PBS or lyophilized from PBS.
Reconstitution	Reconstitute in sterile water for a stock solution.

 Tel: 1-631-559-9269 1-516-512-3133

 Email: info@creative-biomart.com  Fax: 1-631-938-8127

 45-1 Ramsey Road, Shirley, NY 11967, USA

Shipping

They are shipped out with dry ice/blue ice unless customers require otherwise.

GENE INFORMATION**Gene Name**

LYPLA2 lysophospholipase II [Homo sapiens (human)]

Official Symbol

LYPLA2

Synonyms

LYPLA2; lysophospholipase II; acyl-protein thioesterase 2; APT 2; LPL-II; lysoPLA II; APT-2; DJ886K2.4;

Gene ID

11313

mRNA Refseq

NM_007260

Protein Refseq

NP_009191

MIM

616143

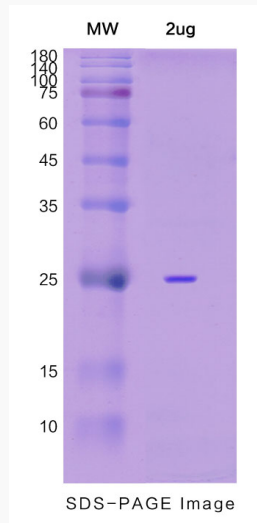
UniProt ID

O95372

 Tel: 1-631-559-9269 1-516-512-3133 Email: info@creative-biomart.com  Fax: 1-631-938-8127 45-1 Ramsey Road, Shirley, NY 11967, USA



SDS-PAGE



Tel: 1-631-559-9269 1-516-512-3133

Email: info@creative-biomart.com Fax: 1-631-938-8127

45-1 Ramsey Road, Shirley, NY 11967, USA