

## Recombinant Human LYPLA2 Protein, GST-tagged

Cat. No. LYPLA2-4547H Lot. No. (See product label)

### SPECIFICATION

<b>Product Overview</b>	Human LYPLA2 full-length ORF ( NP_009191.1, 1 a.a. - 231 a.a.) recombinant protein with GST-tag at N-terminal.
<b>Species</b>	Human
<b>Source</b>	Wheat Germ
<b>Description</b>	Lysophospholipases are enzymes that act on biological membranes to regulate the multifunctional lysophospholipids. There are alternatively spliced transcript variants described for this gene but the full length nature is not known yet. [provided by RefSeq]
<b>Molecular Mass</b>	51.1 kDa
<b>AA Sequence</b>	MCGNTMSVPLLDAATVSGAERETA AVIFLHGLGDTGHSWADALSTIRLPHVKYICP HAPRIPVTLNMKMVMPSWFDLMGLSPDAPEDAAGIKKAAENIKALIEHEMKNIGIPAN RIVLGGFSQGGALSLYTALTCPHPLAGIVALSCWLPLHRAFPQAANGSAKDLAILQCH GELDPMVPVRFGALTAEKLRVSVTPARVQFKTYPGVMHSSCPQEMAAVKEFLEKLL PPV
<b>Applications</b>	Enzyme-linked Immunoabsorbent Assay Western Blot (Recombinant protein) Antibody Production Protein Array

 Tel: 1-631-559-9269 1-516-512-3133

 Email: [info@creative-biomart.com](mailto:info@creative-biomart.com)  Fax: 1-631-938-8127

 45-1 Ramsey Road, Shirley, NY 11967, USA

<b>Notes</b>	Best use within three months from the date of receipt of this protein.
<b>Storage</b>	Store at -80 centigrade. Aliquot to avoid repeated freezing and thawing.
<b>Storage Buffer</b>	50 mM Tris-HCl, 10 mM reduced Glutathione, pH=8.0 in the elution buffer.

## GENE INFORMATION

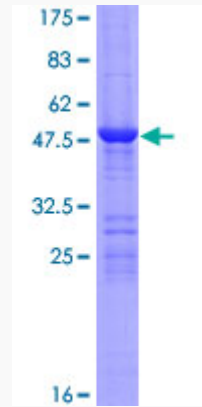
<b>Gene Name</b>	LYPLA2 lysophospholipase II [ Homo sapiens ]
<b>Official Symbol</b>	LYPLA2
<b>Synonyms</b>	LYPLA2; lysophospholipase II; acyl-protein thioesterase 2; APT 2; LPL-II; lysoPLA II; APT-2; DJ886K2.4;
<b>Gene ID</b>	11313
<b>mRNA Refseq</b>	NM_007260
<b>Protein Refseq</b>	NP_009191
<b>UniProt ID</b>	O95372

 Tel: 1-631-559-9269 1-516-512-3133

 Email: [info@creative-biomart.com](mailto:info@creative-biomart.com)  Fax: 1-631-938-8127

 45-1 Ramsey Road, Shirley, NY 11967, USA

**Quality Control  
Testing**



12.5% SDS-PAGE Stained with Coomassie Blue

 Tel: 1-631-559-9269 1-516-512-3133

 Email: [info@creative-biomart.com](mailto:info@creative-biomart.com)  Fax: 1-631-938-8127

 45-1 Ramsey Road, Shirley, NY 11967, USA